

# THE Jessee Family Newsletter

Issue #36

Winter 2010

Vol. XVII No.1

## Dear Cousin,

This has been a fast year, enjoying retirement, but not making much progress doing other things as I had hoped, including genealogy. Having too much fun walking the dog and taking naps, I guess...

I have been doing some reading of late that has me excited about our genealogy and genetic heritage. The books are: *Deep Ancestry--Inside*

*the Genographic Project*, The landmark DNA Quest to Decipher our distant past by Spencer Wells; *The Thirteenth Tribe*, by Arthur Koesler, a history of ancient Khazaria a central Asian empire that converted to Judaism, and whose turkic blood is in the roots of many Eastern European Jews, Russians, and Scandinavians; and *The Melungeons* by N. Brent Kennedy, which I feature inside.

I was honored this year by the Chico High School Foundation, selected as an *alumni-of-the-year* for my work in the building industry in Chico. I helped found and have been President of Community Housing Improvement Program, ([www.chiphousing.org](http://www.chiphousing.org)) since 1973. CHIP is a non-profit low-income housing development corporation. My Chico High School class of 1966 photo (above) was in the local news.

I am pleased that we have many new contributions in this newsletter. Your research results, additions, corrections, and questions are always welcome. I am excited and gratified every time I extend the descendants for the Jessee family and am always astounded as I see increasing evidence that we are all cousins. My spirits are always uplifted by your letters, e-mails, donations and renewals. Thank you.

Because of the increases in postage and printing, I am asking for a new subscription rate of \$20 a year for two issues of the newsletter. I still do not break even, so additional donations are always welcome.

Jim Jessee



## Featured This Edition

**The Jessee Family Reunion** has been rescheduled for every two years beginning August 2010. See also JHF News and Views. I may be there...

I offer to help the JHF publish a **Jessee Genealogy Book**, and comment on this hopeful project.

I recommend our cousin **N. Brent Kennedy's book, *The Melungeons***, and share DNA studies that are relevant to SW VA genealogy, including my male **Jessee Y Chromosome DNA results** which traces our father's father's line via John Jessee the first, the British Isles, Cro Magnon Man, Central Asia, back to Adam in Africa. No, we are NOT Neanderthals as some of our in-laws have suggested.

I would like to **help Robert Keith find his Jessee roots**. See his photo, letter and appeal inside.

I share the news of **the passing of Patricia Plaat**, wife of **Hans John Plaat**. Patricia was an Archer Jessee descendant.

**SW Virginia Families and Other Jesse(e) Families** include information and news from descendants of other Jesse(e) families, and other prominent SW VA families with whom we share roots and history.

I highlight the wonderful photos from **Peggy Gillespie** for the **Phillip and Gabriel Jessee family**.

**Find news on Jessee Family Origins and John and Frankey Lea Jessee and their fifteen children**. See new information and photos, read heart-warming stories, letters, and meet new cousins inside.

**Jim Bray is the hero of this newsletter**. He is a wonderful example of that distant cousin whose random acts of genealogical kindness help us all so much. Jim's contributions are all over the newsletter as he responded to many old questions and concerns, made vital corrections, and provided much new information for several branches of our family.

**There is good news to report regarding Jessee's Mill**. I am pleased to share the correspondence of **John "Mark" Carter**, a historical mill restoration craftsman, who has offered **Sherman Wallace** help with Jessee's Mill. Sherman has been working on the mill and welcomes this assistance.

**MISSING LINKS and CORRESPONDENCE** has items of interest and requests for help, and **JESSEE RESOURCES ON THE WEB** has a few more Web sites for us geeks.

# The 2010 National Jessee Family Reunion

**Saturday, August 14, 2010**  
at the Harry L. Coomes Recreation Center,  
300 Stanley Street, Abingdon, VA

**The 2010 Jessee Family Research Day**  
**Friday, August 13, 2010**  
at the Russell County Library  
203 NW Main Street, Lebanon, VA

The JHF is now scheduling the National Jessee Family Reunion every two years, beginning in 2010. Families are encouraged to have local and regional family reunions in odd-numbered years. The Jessee Family Research Day is held on Friday, preceding the reunion, at the Russell County Public Library in Lebanon, VA.

The Jessee Family Reunion and Picnic is held the second Saturday in August every two years, 10:30 a.m. to 5 p.m., at the Harry L. Coomes Recreation Center & Park, Abingdon, Virginia. The Jessee Historical Foundation holds its membership meeting during the reunion.

**To get there:** Take exit 19 from Interstate 81, go north on Route 11-Main Street toward Abingdon, approximately 0.7 mile. Bear right (north) at the second light onto Thompson Street, beside the shopping center. Go about 100 yards, then go right on Stanley Street. Coomes Recreation Center will be around the big curve, over the hill on the right.

Remember to bring a covered dish, enough to feed your family and additional "cousins." You may bring a folding chair and your musical instruments.

For information about this historic area, lodging, golf courses, etc., please call the Abingdon Convention & Visitors Bureau at 1-800-435-3440.

Phone: 276-676-2282 or Fax: 276-676-3076,  
E-mail: acvb@abingdon.com or  
Internet: www.abingdon.com/tourism.

## **The Silent Auction Needs You**

Plan to participate in the annual silent auction, held during the family reunion on Saturday, to help raise funds for the Jessee Historical Foundation. To make the auction a success, your contributions are needed. Use your imagination to think of items to be contributed. The items for the auctions can be brought to the reunion picnic to be held at the Harry L. Coomes Recreation Center & Park Grounds, Abingdon, VA.

**For picnic and silent auction information contact**

**Mary H. Akers**  
19246 Oakwood Drive  
Abingdon, VA 24221  
276-628-9239

# Jessee Historical Foundation

**Founded March 8, 2001**

The JHF Board of Directors & Officers  
as of 20 October 2007:

Henry A. Davis, Jr., President  
Mary H. Akers, Vice-president  
Norma J. McHone, Treasurer  
Patricia S. Jessee, Membership Secretary  
Pauline Salyers, (acting) Recording Secretary

## **Members of the Board**

James Bray, Beverly Elswick, Nancy Elswick  
Diane Fuller, Sandra J. Hood, Carl Jessee  
Robert Trigg Jessee, Joy A. Malone  
Irene J. Perry, Pauline Salyers, Vernon Salyers  
Janice J. Tiller, Randy Williams

Go to [www.jessee.org](http://www.jessee.org) for more information on JHF activities, news, and events. Please join.

## **Membership Information**

The Jessee Historical Foundation extends an invitation and warm welcome to new members and welcomes your membership renewal.

Membership will run from reunion to reunion every two years. Dues will be collected by mail and at the bi-ennial reunion in August for the following two years. JHF membership dues may be mailed to the Membership Secretary below at any time.

There are three categories of membership. Anyone age 81 or older may request free lifetime membership. The fee is \$10 per person. Ask about lifetime membership, too.

1. Regular Member: If you have a Jessee, Jesse, Jessey or Jessie surname, or are an adult Jessee descendant you are eligible to be a regular member with full voting privileges. Please provide information to verify your Jesse(e) lineage.
2. Associate Member: Non-voting spouses, related family, or friends of a regular member.
3. Junior Member: Non-voting family members under age 18.

**Send an application:** Get one at [www.jessee.org](http://www.jessee.org) or provide the following information: name, street or PO Box address, city, state, ZIP, phone, e-mail address, and your Jessee pedigree. Please send your application and check, payable to Jessee Historical Foundation, Inc., for \$10 per person, to the membership secretary, at the following address.

**Jessee Historical Foundation Inc.**  
C/O Patricia Stone Jessee  
Membership Secretary  
PO Box 1617  
Lebanon, VA 24266-1617

# Jessee Genealogy Book Proposed by JHF

**The Jessee Historical Foundation is proposing to publish a book on Jessee Genealogy.** Please see JHF News and Views for more information. I think this is a terrific idea and wrote the following to Hank Davis and Vernon Salyers asking them to share this with the JHF Board.

Vernon wrote last summer that the Jessee Historical Foundation (JHF) is interested in doing a Jessee Family Genealogy Book, and that he has over 15,000 descendants recorded for John Jessee (1750-1816) and Frankey Lea Jessee (1852-1836), who moved from Caswell County, NC to Russell County, VA in 1790, and established a family of 15 children.

It is not clear if Vernon is offering his database for this JHF publication, but I assume so. I believe his database overlaps with mine, but that he has more information on some and very many unique records based on years of research by Vernon, Pauline, and his sister Nancy Elswick. It would be good to reconcile our two databases.

My genealogy records are available at our Website [www.jessee.org](http://www.jessee.org), but the "public" RootsWeb version seen there excludes the names and information on living people. My private database includes full information for living and all I have recorded (I have boxes of data entry to do) about the descendants of John and Frankey's 15 children. My records also include the descendants of Philip and Gabriel Jessee, who settled in Russell County at the same time. I believe Phillip is a brother or cousin of John Jessee.

I welcome your scrutiny of my database and your help with additions and corrections for at least the first three to five generations for both families.

I have over 20,500 direct descendant records for John and Frankey Lea Jessee including their spouses. When you include the spouses' parents and related, I have well over 35,000 records. There are over 44,000 total records in my public database which also includes many sons and daughters of other founding SW VA families over many generations.

I am willing to help and contribute my database to this effort. I wrote to Michael Dye that it would be great to compare the databases of major SW VA genealogists, and begin to carefully compare and integrate the databases, as I know we have much overlap and inevitable errors. However, the effort to track down the differences and discrepancies, and just different formats used, not to mention the errors between us, could drive a person bonkers. There may be software out there that would help compare GEDCOM files, and with lots of time, integrate them, one by one. But I do not think I could undertake that by myself.

I suggest that the JHF produce a book that includes only the first three to five generations at this time. It should include the descendants and related families of the two Jessee family roots in Russell County, John and Phillip Jessee. This will still be a huge book, and we need to carefully consider how to publish so much information and make it interesting, readable, inexpensive and accessible.

The cost of printing could be excessive, so we may just want to consider doing it on a CD or DVD with an index and search tools, too. That still means editing and preparing it like a book, as a PDF file, so it could be printed by someone from the DVD or CD.

As a first goal, we should concentrate on getting the publication's database comprehensive and correct for 4-5 generations from the founders. That just gets us into the time of photography, after the 1840s, for some photos to be included.

I think that each Jessee descendant family might consider picking up at generation four or five, which puts us into and after the Civil War, late 1800s, and do their own book from that time forward. Several branches already have done such. The Stanford Lea Jessee descendants have been well recorded in a book by Marshall Jefferson Jessee. I intend to do the same for my great-grandfather, Col. John Tivis Jessee, CSA VA 29th, who is the fourth generation removed from John and Frankey, via John Jessee, Jr., and his son Joseph. I would like to do this someday for my branch of the family. We have lots of photos after this time.

There has been scant progress since last summer. I have created test descendants charts up to five generations in "text" based files for Mary Akers and Hope Davis to review and see if they can be worked with for a publication. I have not heard from either Vernon Salyers or Michael Dye about some database comparison and comprehensive update effort. If my database is to be used, I would like to have it thoroughly reviewed and compared to others for completeness and error corrections, before we publish it. Help please.

**ANGIE ROBERTS** posted on [varussel@rootsweb.com](mailto:varussel@rootsweb.com), 9/18/2009, the following in response to an ongoing Russell County discussion about genealogy research and the use of psychics if not prayer. This quote is a good inspiration for our work, and blessed be those distant cousins who help us.

*I personally like to think that God appoints someone from each family branch to be the family historian and the nudges are from Him. I love the way He keeps leading me to find the historians in our family that are 2nd and 3rd cousins, who are also the only ones in their family who have been impressed to do the family research.*

Amen, Jim

## *The Melungeons-- The Resurrection of a Proud People*

*An Untold Story of Ethnic Cleansing in America*  
by N. Brent Kennedy with Roby Vaughn Kenneday.

I just finished reading the book above and am so excited about this research and the author's efforts. I could not recommend a book any more highly than this one to my cousins. It is a compelling and enjoyable read, but painful at times to hear the stories.

**N. Brent Kenneday is a Jessee cousin via two Jessee lines.** He is a descendant of John Jessee, Jr, via Jefferson Jessee and Nancy Counts, and their daughter Margaret who married Rev. Abednego Kiser, the grandson of Mary Polly Jessee and Abednego Kiser via their son Rev. Elihugh Kiser and his wife Jane Skeen. His book provides the best history of the Melungeons I have yet read. This book very much includes the genealogy for many historic families with whom the Jessees have also intermarried, and suggests that our Frankey Lea could be Melungeon.

**MELUNGEON FROM WIKIPEDIA**, the free encyclopedia, provides the following information.

Melungeon is a term traditionally applied to one of a number of "tri-racial isolate" groups of the Southeastern United States, mainly in the Cumberland Gap area of central Appalachia: East Tennessee, Southwest Virginia, and East Kentucky. Tri-racial describes populations thought to be of mixed European, sub-Saharan African, and Native American ancestry. Although there is no consensus on how many such groups exist, estimates range as high as 200. Some self-identifying Melungeons dislike the term tri-racial isolate, believing that it has pejorative connotations. Until the late 20th century, some considered the term Melungeon to be pejorative.

DNA testing: At the suggestion of N. Brent Kennedy, a DNA study on Melungeons was carried out in 2000 by Dr. Kevin Jones, using 130 hair and cheek cell samples. These samples were taken from subjects who were largely chosen by Kennedy himself as representative of Melungeon lines. McGowan (2003) described Dr Jones' discovery of the political aspects of genetic research when the results of the study caused disappointment among some observers. "...Jones concluded that the Melungeons are mostly Eurasian, a catchall category spanning people from Scandinavia to the Middle East. They are also a little bit black and a little bit American Indian." This study has to date not been submitted to a peer-reviewed scientific journal, nor has a list of those contributing samples been published. It is unclear to what extent the subjects were actually descendants of families historically designated or since documented as "Melungeon."

More recently, Jack Goins has started a Melungeon DNA Project, with the goal of studying the ancestry of hypothesized Melungeon lines. So far, Y chromosomal DNA testing of male subjects with the Melungeon surnames Collins, Gibson, Gill, Goins, Bunch, Bolin, Goodman, Stowers, Williams, Minor and Moore has revealed evidence of European and sub-Saharan African ancestry: Y haplogroups R1b, R1a, J2; and E3a, respectively. This finding is consistent with the documentation and research by Paul Heinegg and Dr. Virginia DeMarce. One Goins line looks likely to be a variety of Y haplogroup L with roots in Portugal, Spain and Italy. Taken as a whole, such findings appear to verify the early designation of Melungeon ancestors as "mulattos", that is, descendants of white Europeans and Africans. The line with a variety of haplogroup with roots in Portugal, Spain and Italy is consistent with historian Ira Berlin's research showing that some of the charter generation of enslaved or servant people in the Chesapeake Bay colony were Atlantic creoles. They had Spanish or Portuguese father or paternal ancestors and African mothers; ancestors were connected to the African slave trade run by Spain and Portugal. More recently, a large DNA genetic test concluded that Melungeons are of Iberian (mostly Iberian Jewish) descent, though this is debated.

## **Jessee Male Line Y-DNA Haplogroup Determined**

**I submitted my DNA for genetic testing to FamilyTreeDNA.Com, under the Jessup surname project, which includes our Jesse, Jessie, and Jessee surnames as variants.** If indeed my Jessee male line is genetically unbroken, then all John Jessee male descendants should have the same Y Chromosome DNA Haplogroup that was determined for me. **The Jessee Y DNA Haplogroup is R1b1b2.**

Here is what I have learned from Wikipedia, the free encyclopedia and FamilyTreeDNA resources.

In human genetics, Haplogroup R is a Y-chromosome DNA haplogroup, a subgroup of haplogroup P, associated with the M207 mutation.

Origins: It is believed to have occurred somewhere in Central Asia between 30,000 and 35,000 years ago.

Distribution: The majority of members of haplogroup R belong to the Haplogroup R1, defined by marker M173. R1 is very common throughout Europe and western Eurasia. Its distribution is believed to be associated with the re-settlement of Eurasia following the last glacial maximum. Its main subgroups are R1a (SRY1532) and R1b (M343). **One subclade of haplogroup R1b, R1b1b2-M269, is the most common haplogroup in Western Europe.**

### **We in fact descend from Cro Magnon man.**

The above assures us that our Jessee male ancestors were of recent European origin, with high probability that our Jessee male ancestors came from the British Isles. England, Ireland, Scotland, and Wales are all in the hunt. By far, the DNA matches of others who have submitted DNA to FamilyTree.com are from the British Isles.

If additional Jessee males would submit their DNA to this same FamilyTreeDNA Jessup Surname project, we can confirm this information and narrow our Jessee male origins even further.

If we can find a daughter of a daughter of a daughter only descendant of one of the seven daughters of John and Frankey Lea Jessee, we can discover Frankey's Mitochondrial DNA heritage, and determine if Frankey has European, Indian or Melungeon origins.

In the context of this DNA discussion, and in consideration of the importance of knowing one's biological heritage for reasons of health and progeny, not to mention heritage, I am featuring here this request for help from Robert L. Keith.

**ROBERT L. KEITH** [rlkwlk@yahoo.com] wrote, 9/13/2009, with this appeal for help to locate his Jessee biological father. I hope someone can help.

Hello, my name is Robert Lynn Keith. I was born on March 10, 1959, in Blount Co, Tn. I think it was in Maryville. I was given up for adoption at a very early age, possibly even right after birth. I was in several foster homes, and at least one orphanage. I was adopted at the age of 5, and grew up on a farm about 30 miles from Nashville, Tn. I had bright red hair as a child, which has turned in to more of a brownish red now. I stand 5'11" tall and weigh around 280 pounds. I have hazel colored eyes. I love to hunt, fish, and collect knives. I'm an avid reader, reading about 5 or more books a week. I have a very laid back personality, takes quite a bit to get me riled up.



In Remembrance



*patricia plaat*

I don't really know anything about my birth family, except I may have been a Jessee (Jesse, Jessie, Jessy, etc) I would love to find my family, if at all possible. I don't mean to stir up any bad memories for anyone, or to create any problems for anyone. I have no anger or animosity toward whoever gave birth to me, and for what ever reason, had to let someone else raise me. It takes a lot of love to realize that you can't care for your child, and to give them to someone else who can. I've had to make a lot of decisions in my own life, too, that was life changing. Some I feel like were good choices, some I wish with all my heart that I could change. I have a beautiful daughter and two beautiful granddaughters, and I think they also deserve to know about their biological family. I was raised an only child, so it would be great to have brothers and sisters and family members that I actually look like ! lol

My email address is [rlkwlk@hotmail.com](mailto:rlkwlk@hotmail.com)  
cell # is 615-389-9148  
home # is 615-667-1186

....if anyone knows any information that will help me find my family, please let me know.

I responded that I would like to share this with the Jessee List and Newsletter with a bit more details.

Hi Jim, Thank you for responding so fast. I'm excited and hopeful about this. I don't know if you remember me or not, but I actually got in touch with you a few years back. I sent you a letter and a couple of pictures to publish in the news letter.

My adopted parents were very closed-mouth about the whole situation. It was common knowledge that I was adopted ( I even remember them adopting me), but at the same time, I was never allowed to discuss it. ...So, on the rare occasion that I questioned her about my biological mother, she said "I am your mother!" So, one day when I told her that my wife (which was my girlfriend at the time) and I was married she went totally ballistic and started shouting "Well, then ya'll are Jessees, NOT Keith's ! Ya'll are Jessees !" And a lot more ...

But my wife picked up on what she was saying and asked "So, Robert was a Jessee? That's what his biological family's name is?" And my mother literally went white! ... I had a distant cousin tell me a few months ago that she's pretty sure that I have siblings.

You absolutely have my permission to put this in any of the Jessee information that you think will be helpful. And, thank you for doing this. This could lead to something that will change mine and my family's lives forever.

**HANS JOHN PLAAT** [jhnpl@juno.com] wrote, 10/1/2009, with this sad news regarding the passing of his wife, **Patricia (Van Vickle) Plaat**, an Archer Jessee descendant. John and Patricia Plaat are long time fellow genealogists and among my earliest supporters of this newsletter.

After battling cancer, Patricia Plaat succumbed to complications on August 14, 2009 in Portland. When she passed she was surrounded by her family. We remember her as a loving wife, mother, grandmother and friend.

WITH HER HUSBAND OF 59 YEARS, SHE EXPLORED THE WORLD. They started their adventure with their first overseas trip to The Netherlands for their honeymoon and took their last trip there together last summer. Along the way, they also visited Europe, Australia, New Zealand, Canada, Puerto Rico and most of the 50 United States. But she also cherished being home with Dad, reading the paper, going to the Farmers Market, sharing Dutch cheese and toast, discussing politics.

AS A MOM, SHE ENCOURAGED US TO SEE A BIGGER WORLD. She read to us all the time, took us to plays and museums, drove us to our school activities, was an enthusiastic spectator at our games, recitals and performances, and encouraged us to continue our education and to travel. Later, when we moved away, whether it was our birthday, anniversary or any holiday, she would always remember with cards, gifts and phone calls. Later she would lavish the same love and attention on our spouses and each of her 11 grandchildren. And always there were books, articles and clippings for the children.

SHE LOVED HER FAMILY DEEPLY. She enjoyed spending hours on the phone laughing with her sister, hosting Dutch relatives in the states, exploring tidepools at the Oregon coast with her granddaughter, lunching and shopping with her daughter, having Sunday dinners at her son and daughter-in-law's home. And some of her favorite times were when we all came together. She was always supportive, always kind and always there for us.

SHE WAS AN ANGEL ON EARTH AND THE HEART OF OUR FAMILY. She was deeply loved. We miss her every day and are comforted when we see her indelible spirit in ourselves and in the lives of our children.

## SOUTHWEST VIRGINIA FAMILIES

Here I will feature articles, documents, and other information about Southwest Virginia families who have intermarried with the Jesse(e) Family over many generations. Your contributions are welcome.

**SHARON LEMKUIL** (sl.lemkuil@verizon.net) posted on RootsWeb this note about the **Counts Family**, and specifically about the family of **Robert Carter who married Elizabeth Counts** (RIN 5522).

Koontz and Counts are misspellings of Kountz.  
Cosane is a misspelling of Casana.

Eppa H. is Eppa Hunten Carter, named after a well known Virginia lawyer named Eppa Hunton who worked with a Carter. A nephew of Eppa Hunton, whose father is Charles Buck (Charlie) Carter, Jr. is Eppa Oan Carter who married Lulu Grace Williams. Her brother Luther Lowe Williams married Eppa Oan's sister Mary Myrtle Carter.

**LORETTA KISER** [lfkiser@gmail.com] wrote, 11/7/2009, regarding old photographs and other information she and her fellow researchers have posted on the **Kiser, Keyser, Sutherland, Childress and Chaffin** families.

Hi, you might be interested in seeing the grave stones photos that I recently posted on the James & Sarah B Sutherland - Charles & Mary Keyser site. I also posted some of my family and granddad Gid and Lillie Kiser. Becky Chaffin recently posted a photo of grandad's sister Rachel Sutherland and the hotel they once operated. No other photos so far of Leah Childress, but I had never seen the one they have of her at Gard and Winnie's Anniversary till I joined that site.

I recently joined Ancestry.com, and I am amazed at the information they have. I learned a lot from the census records that I had questions about and there is no one left in my family who would know for a certainty. I do have a couple of cousins in their 80's, and they help me research when they can, I recently heard (again) the story of how Grand dad Gid and Lillie's house burned down in the early 40's.

**ERIC ALEXANDER** [reajd@hotmail.com] wrote, 10/1/2009, with information regarding the **Alexander and Brawley** families, and specifically, **Nancy & Isaac Robinson**.

Hello Jim, I'm one of your local distant cousins here in the Chico area. In filling in some holes on the Alexander family of Russell County, VA, I ran across your website again where I was looking at who you had John Alexander, Sr's Nancy married to. Many at Ancestry.com and elsewhere have her married to Anible Robinson, which I simply accepted for a long time. But then I realized that Isaac Robinson was the most likely candidate given that he's easily documented in the area of Elk Garden, his marriage to a Nancy Alexander is easy to find, the names of their children mostly mirror her siblings' names, etc--documents and circumstantial evidence. And then I began to wonder why anyone would connect Nancy Alexander with the Nancy Robinson living with Anible in Scott County, VA. The only thing they have to go on is a very common first name Nancy, a pretty common last name Robinson, both are in southwestern VA, and Nancy Robinson's about the same age as Nancy Alexander. But that's it. And then someone pointed out to me something I'd clearly missed--both Nancy and Anible Robinson of Scott County, VA, are clearly shown in the census to be female! When I did a little checking I found that the only Robinson in Scott County in the 1840 census was a George Robinson who had two females in the family whose ages mirrored those of Anible and Nancy. I've finally come to the conclusion that Anible is not our Nancy Alexander's husband. I thought I'd share this with you because I noticed that you have her husband listed as "Isaac (Anible) Robinson." One of the problems I see on the net is that others simply copy what others have posted without taking the time to look at what's actually there. I did it for a long time, and now I'm not only filling in the gaps but correcting much of what I'd previously thought.

**CAROLYN ROBERTSON** [hbagk@charterinternet.com] wrote, 8/7/2009 with **John W. Mays** family information.

This is the following pedigree that I have on John W Mays.

John W. Mays

B: 1847 in Russell County, VA

M: Dec 25, 1869 Married - Tabitha Jessee

D: June 15, 1927 in Honaker, VA

Children:

1. Elizabeth: B: April 10, 1870

2. Martha E. - lived in Kansas City, MO in 1927 and married a Fugate

3. William Nelson: B: 1872 I am not quite sure this is the same one.

D: 1928

Wife: Amanda - B: 1881 D: 1922

Child: Emory Loyd - B: May 28, 1903 D: Jan 6, 1913

I also show him married a second time to Elena Parks on Jan 4, 1923

William, Amanda and Emory are buried close to the Mays home place

4. John H.: Born: March 30, 1874, was living in Bluefield, W. Va in 1927

5. Mary Virginia (Mollie) B: Dec 1, 1875 D: April 22, 1975

M: William Madison Stapleton on Aug 7, 1900

Children:

1. Oakley Stapleton - B: 1902 Died: Feb 24, 1996

2. Roy F. Stapleton - B: 1903 Died: May 5, 1994

3. John Henry Stapleton - B: June 25, 1907 D: April 17, 1998

4. Marzell Stapleton - B: Sept 30, 1909 D: April 16, 1998

5. Nellie Kate: B: 1912

6. Ollie - B: 1918

7. Raymond Grover Stapleton - B: Mar 5, 1905 Died: Mar 28, 1974

8. Viola - B: 1914

6. Rachel Victoria Mays - B Dec 9, 1884 D: June 1978 M: Marshal L. Mays

Children:

1. Pearl - B: 1909

2. Margaret - B: 1911

3. Wesley Frank - B: 1922

4. Gladys - B: 1917

5. Ruth - B: 1913

I show 2 children buried at the Mays Cemetery as follows: Emma V - Born & Died Feb 8, 1915 and Ralph Lee - no dates on the headstone, just son of M.L. and R. V. Mays

7. Liddia Margaret - Daughter of J. W. & Tabitha Mays - died at age 3 years. Buried at Mays Cemetery.

Father: James K. Mays, Jr

Mother: Mary (Polly)

James was born in 1820, in North Carolina

I have Polly born in 1825 in Tennessee and Died in 1908

There is a gravestone for a Polly Mays in the Mays Cemetery that just states Polly Mays, Wife of James Mays, 72 years. I don't know if this is the same or not, age is not in agreement.

The father of James K. Mays, Jr. is James Mays Born 1804

This is all the information I have on him. He was probably James Mays, Sr. and since James K. Mays Jr. was born in North Carolina I presume he was from there also and then moved to Russell County.

## JESSE(E) FAMILY ORIGINS

There are many "Jessee," "Jesse," and "Jessie" families in the United States and Canada that we know are descended from families whose American origins are in Virginia. There are many Jesse, Jessee, Jessie, Jessey and, perhaps, Gesse, Gessey, Jessup, Jeshy, Jaci, Jacy, and Jacie families in the world whose kinship is unknown. I believe we are all cousins. As "Jesse" and "Jessee" are the two most frequent spellings of this family name, I shall adopt the convention of using "Jesse(e)" in reference to the larger family.

Please see Newsletter #10 available online at [www.jessee.org](http://www.jessee.org) for an extensive discussion and summary of what we know so far about the origins of the Jesse(e) families in America. The many clues there lead us to several new avenues of research on the origins of the Jesse(e) families in, at least, Amelia Co., Cumberland Co., Essex Co., Isle of Wight Co., King and Queen Co., King William Co., Lancaster Co., Nansemond Co., Middlesex Co., Powhatan Co., and Spotsylvania Co., VA, not to mention the Isle of Wight and Devonshire, England.

**FAMILY TREE DNA** includes the Jessee surname in the derivatives of the surname Jessup. A newsletter contributor sent a document from **THE HISTORICAL RESEARCH CENTER** that provides a **Family Name History for Jessee**, which also suggest this Jessup/Jessep/Jessop origin as well others. I am inclined to believe the Norman French origin.

JESSEE: There are a number of explanations as to the origin of the surname Jessee. One is that it is a variant of Jessep which is patronymic. This means that it is derived from the first name of a father. In this case Jessep is a pronunciation of Joseph which itself means 'he shall add'. Jessee therefore would simply mean 'son of Joseph'.

Alternatively, Jessee may have developed independently of the surname Jessep and may mean 'son of Jesse.' Jesse comes from the Hebrew word meaning 'Jehovah is'. Finally, it is possible that Jessee is, in fact, a French surname which was brought into England in the wake of the Norman invasion of 1066. the French 'lessee' is occupational in origin and developed to describe one who worked on the land. It has its origins in the French word 'gesse' meaning 'sweet pea'.

An early record of the surname in England includes one Joan Jessop who is mentioned in the Subsidy Halls in Suffolk in the year 1524. Much earlier, in 1379, John Jesup appeared in the Poll taxes for Yorkshire.

Notable bearers of this surname are Fryniwyd Tennyson Jesse an English novelist and playwright and a grand - niece of Alfred, Lord Tennyson. Also John Heneage Jesse (1815 - 1874) an English historian who wrote the Court Memoirs of King George III.

**HOPE DAVIS** [hwd3188@gmail.com] wrote, 12/22/2009 with this new resource to be explored regarding our **Jesse(e) family origins in a new county for exploration, Powhatan County.**

#### Powhatan County Selected Marriages

[www.powhatanhistoricalsociety.org/cemetery/selected-marriages.html](http://www.powhatanhistoricalsociety.org/cemetery/selected-marriages.html)

The list below represents a selected number of POWHATAN COUNTY marriages. The entries have been accumulated from the survey and documentation of Powhatan County cemeteries, and other genealogical sources. The listing is viewed (default) by the Groom's last name or by utilizing the link, the Bride's last name. Anyone who may have additional Powhatan County marriages, regardless of when occurred, which they wish to add, may do so by sending an email to Cem\_Maint@msn.com.

Jesse, John	Carter, Milley	12/11/1805
	Thompson, David	d of Daniel - Milley of legal age
Jesse, John	Page, Sarah	3/29/1804
	Thompson, David	wid of James
Jesse, John	Smith, Clia	2/17/1791
Jesse, Thomas	Warriner, Poley	10/15/1796
	b: Joseph Warriner	
Jessee, William	Hix, Elizabeth	1/4/1785

## RICHARD JESSE

**Richard Jesse** was born in 1768 in Middlesex Co., VA, and married Frances (Chowning). Their descendants have been provided to the Jessee Family database at [www.jessee.org](http://www.jessee.org) by **Donald R. Coleman.**

## SAMUEL JESSE

**Samuel Jesse**, born abt 1770, who married Catherine George, is another distinct Jesse family in America that we report on from time to time. I have 11 children recorded.

## WILLIAM JESSE

**William Jesse**, born before 1745, we speculate had at least four children that we have recorded, John, Lucy, Thomas, and Elizabeth Jesse.

## JOHN AND CLIA (SMITH) JESSE

**Descendants of John and Clia (Smith) Jesse, and two of their sons, especially William Morgan Jesse, are well documented in the book, *The Jesses, 1601-1928* prepared by J. S. Jesse.**

**HARRY AND BEVERLY JESSE SHUPTRINE** in their book *William Morgan Jesse and His Descendants* (July, 1995. Revised August, 1996), Gateway Press, Inc., of Baltimore, Maryland, August 1995, detail over 6200 descendants of William Morgan Jesse. This book is a major revision to and update of *The Jesses, 1601-1928* by J. S. Jesse.

I get steady inquiries and bits of additional information from descendants of this JESSE family. We owe so much to the work of Harry and Bev Jesse Shuptrine, but due to health reasons they have retired from genealogy. I will continue to provide updates for this family in the database at [www.jessee.org](http://www.jessee.org).

**PATRICIA DAVIDSON-PETERS** (sunnyann@citlink.net) posted on RootsWeb regarding **Sarah Ann Daily** (RIN25171) who married **Samuel Jesse Oslin**, a great-grandson of John and Clia Jessee.

Mother of Sarah Ann Daily is Mary Maria (Overman), born 08 Feb 1830 in Indiana; married to John Daily in Clark Co., IN on 12 Feb 1846; died Atchison Co., MO on 22 Mar 1874. Mary Maria, daughter of Joseph Overman & Jane (Covert).

Patti wrote, 7/5/2009, with more information regarding the Samuel Jesse Oslin family. Those who wish to see the PDF she provided should contact Patti at the email above.

I just added a Post-em for Sarah Ann Daily's mother (Mary Maria Overman) to your World Connect with a link to my Daily Branches of Clark Co., Indiana. Your information has been helpful in giving me exact vitals, filling in the census records I have for the Samuel Jesse Oslin family, so thank you so much. Am attaching the info for Samuel's family that I have.

## PHILLIP AND RACHEL JESSEE

Phillip Jessee (1742-1858), wife Rachel, and his son Gabriel Jessee (1804-1886), of still unknown relationship to John Jessee (1750-1816) but assumed to be a brother or cousin, are among the historic Russell County, VA pioneering families. Phillip, who is reported to have lived to be 116, is sometimes referred to reverently as "Old Phillip." Here I will feature articles, documents, and other information about Phillip and Rachel Jessee, their son Gabriel, and their descendants. Your contributions are welcome.

Gabriel Jessee descendants Irene Jessee Perry, Janice Jessee Tiller, Carl Jessee, and the late J.C. and wife Nellie Jessee have been generous supporters and stalwart workers who have helped establish the Jessee Family Foundation and volunteer for many other Russell County history, cemetery restoration, and genealogy projects. For their work, we thank them.

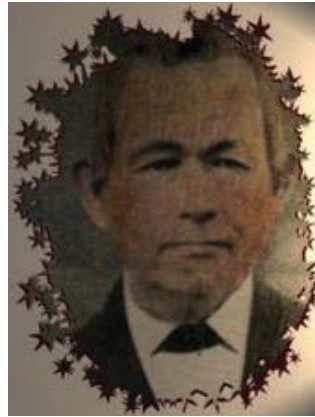
**PEGGY GILLESPIE** [wonach@gmail.com] wrote, 11/26/2009, with new Gillespie Family information [posted in the database] and a treasure of photos.

Jim, I am the fourth child "daughter" of Clarence C. Gillespie & Mary Ruth "Honaker" Gillespie. Dad is the sixth child "son" of John J. Gillespie & Nancy L. "Gilbert" Gillespie. Nancy's parents are; Samuel S. Gilbert & Lucinda "Jessee" Gilbert. Lucinda is the daughter of Gabriel Jessee & Nancy "Wallis" Jessee.

Gabriel & Nancy are my great, great grandparents. Samuel S. Gilbert is the son of Joseph & Polly "Tiller" Gilbert. Their relationship was bumpy because Polly was the care-taker of her dad because of the injury he suffered during the war. Also, because of the lawsuit ledged against him (dad) over property he'd purchased after his settlement, Polly was in and out of court the duration of their relationship! (Lehman Tiller) gave me the information based on Polly & Joseph's life. Moreover, the fact that they were not married at the birthing of their children, they obtained Polly's maiden name "Tiller" for years. Eventually the parents were married, (Polly & Joseph), shortly afterwards, maybe a year or so later, she passed away. Indeed a very sad love story.

Here are pictures of the Gillespie family, John & Nancy Gilbert Gillespie when they were young, another of the couple as they grew older. Also, photos of Gabriel & his wife Nancy Wallis and the Gabriel Jessee land [below].

[Later] Here are some more old photos, you can choose whatever is suitable for your newsletter. The first one is of Mary & her niece "Loretta". Mary is the youngest child of John & Nancy Gillespie. The next one is Nettie and her son Justin, (twin) and his wife. Nettie is one of the daughter's of Samuel & Lucinda. She lost her husband in a tragic accident, distraught she headed west, settling in Colorado. (I was in contact with her son Justin until he became very ill). The next photo



is of Mamie, daughter of John & Nancy Gillespie. Her youngest son Kenneth just passed away from kidney failure. Kenneth is the first man shown in the photo of the group in a motel room. We'd gathered there after the death of Myrt's daughter, "Corrine"! Behind Ken in the photo, from left to right; Chris, (Shelby's son) my older sister, my son "Gary Lee", Sylvia & Shirley, (Mamie's daughters). My daughter and her boyfriend, barely seen.

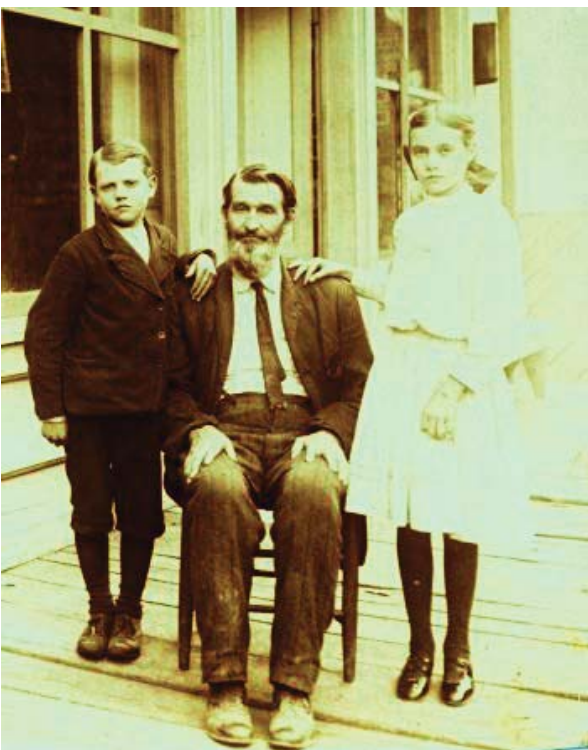
Next photo, is Arthur in his uniform, the eldest son of John & Nancy Gillespie. My daughter and I on the swings, My sister Patty & I, in







her living room. The old picture on the stump on the Gillespie place is; from left to right, my mother with her eldest children, Shelby, Frank. Nancy L is on the right with her daughter Myrtle and Myrtle's daughter "Corrine" holding the family dog. The gathering of the Gillespie family is; from left to right; Me, with my eldest sister Shelby on the sofa, the brothers behind us are; Victor, our youngest bro. Buster and Rick. We lost Frank in 2003. Patty was not there at picture take. Hope you enjoy looking at the older pictures. Have any to share with me? Peggy,



## JOHN AND FRANKEY (LEA) JESSEE

Many, if not most, Jessees in America are descended from John (1750-1815) and Frankey Lea Jessee (1752-1836) of Cobb's Creek, Caswell County, North Carolina and Carr's Creek (today Mill Creek) in Reed's Valley, Russell County, Virginia. They had fifteen children. There are many "Jessee," "Jesse," even "Jessie" families in the United States and Canada who are known descendants of those fifteen children. All of us living descendants are about fifth or sixth cousins, or even closer kin. Here I will report new information for John and Frankey Jessee descendants and highlight news and significant contributions regarding each of their fifteen children.

### John Jessee Research

I have wondered when would come the day that someone would seriously question if our John Jessee is the same John Jesse or Jessey who served as a musician in Yarborough's Regiment, NC Continental Army or in any capacity during the War. I can feel the shudder across the family, as all John Jessee-based DAR and SAR applications are dependent upon this fact. Our master researcher and chief myth debunker, Tom Rudder, has dared to ask the question and has been researching it for some time. The Winter 2007 Newsletter outlined the facts as Tom presented them. Tom has girded his loins to go public with the question to the family. Can we prove or not that our John Jessee is the same John Jesse/Jessey who is listed in Yarborough Regiment, or even served at all? And of course, we do not have any proof, only speculation about John Jessee's heritage, when and where he was born, his parents, etc.

**TOM RUDDER** [ruddert@sbcglobal.net] wrote, 1/17/2009, with further details on his thesis that our John Jessee may not have been a soldier at all.

Jim, I see that you have my doubts about John being in the NC Military during the Rev War in your Newsletter. I once sent you an article on "The Warrenton Army Frauds" about the use of names of people who were paid for time in service for which they never did. It was quite long and you probably didn't read it all.

From the article, "This process allowed one man to present the account of several former soldiers, draw their due bills and certificates, and then, after subtracting his fee, give the original claimant his money." As you can see this allowed one man to submit the names of many individuals whether they served or not. This article goes on to say that 65% of the names could not be found in the North Carolina military records.

I think I told you before that I checked all the North Carolina Military records at the National Archives and found no John Jesse(e). So the facts are that even if the name "John Jesse(e)" had been in Pierce's Register, the odds would be 2 to 1 against that John Jesse being in the North Carolina military at all. And when you consider the fact that not one of his descendants (children) filed for pension benefits for his Rev War service they had to have known that he was not in the Rev. War. No man with a wife and 4 kids would have spent a year in the Continental Army any way.

The article also said that by the time Pierce came to North Carolina the state had already paid most of the soldiers what was owed them, which would mean that Pierce's North Carolina list would have been greatly inflated. Tom

## Frankey Lea Research

The 2006 research of the Rev. Dr. Cynthia Forde speculates that Frankey is the daughter of George Lea, son of William Lea and Lucy Tolbert, born in 1761. This is one of the possible candidates we have outlined on the Frankey Lea record in the database, that we have found through much mutual research. If true, it would mean she is the *granddaughter* of William Lea and Mary Barnett, not their daughter, as I and others speculate. It would mean she was 14 when she married John at 25. I do not see the alignment of names and other characteristics to make this the leading candidate to be our Frankey Lea.

This research also attempts to differentiate Col. George Lea RIN 5301, that Tom and I have speculated to be a brother of Frankey who married Jeanette Logan Douglas and has a son William Archer Lea, from the George Lea RIN 5287, who married Lucy Tolbert. The latter, Dr. Forde's researchers and some others speculate, are the real parents of our Frankey Lea. The good news is that with all these overlapping names and generations, they are all in the same William and Mary Barnett Lea family, unless of course our Frankey Lea isn't!

Tom Rudder asserts, and I concur, that our Founding Mother Frankey is the unrecorded daughter of William Lea of Cobbs Creek and wife Mary "Polly" Barnett (or possibly Archer), making her a sister of Col. George Lea and several others who are well recorded in Caswell Co., NC. Frankey's names for her children are most consistent with this assumption, because most of the names she uses are only found in this branch of the Lea family. John and Frankey name their children as follows: John Jr., then Archer (possibly her mother's maiden name), then William after her father, Lea (after her own maiden name), David (source unknown), Boedicia (after an alleged sister, see below), Mary "Polly" (after her mother), Frances (after herself), Sarah (after her sister), James (after her brother), Elizabeth (after her sister?), Rebecca (source unknown), George Lea (after her brother who was a prominent citizen and tended to many legal issues for John and Frankey in Caswell Co.), Martin and Jane (sources unknown).

All of the above needs continued research and proof. We ask for research help and contributions.

## JOHN AND FRANKEY'S CHILDREN

I correspond with many descendants of John and Frankey's fifteen children and constantly glean much new descendant and pedigree information. I cannot provide all of it in the Newsletter but do record it in the family database. Please visit the family database at [www.jessee.org](http://www.jessee.org) to see many new additions.

## I. John Jessee, Jr.

John Jessee, Jr. (1775-1834) married Mary "Polly" Armstrong (1780-1840) and they had six children. This is the editor's line.

**DANIEL EDWARD JESSEE** [djdj@jetbroadband.com] wrote, 12/26/2009 with new descendants information for his branch of the family, starting with **Henry Jessee** son of **Noah D. Kernan Jessee**.

Jim, my name is Daniel Edward Jessee. I have looked at the web site & seen that there is no info from the descendant of Henry Jessee. I have all of the info on his descendant. I sent you a email the first of the year but it would not deliver. If you get this one let me know & I will send you the info. We seem to be the unowned Jessees.

I responded: Daniel, I am very happy you persisted in contacting me. I would love to receive your information and learn more about your branch of the family. If you permit, I will be pleased to share this new branch of the family in the Jessee Newsletter, which you can also see at [www.jessee.org](http://www.jessee.org). Please feel free to write a little introductory or other information about your "Unknown" branch of the Jessee family.

I am glad that you got my email. The ID# for Henry Jessee is I 6321 or reference # 40+1543 his date of birth is 8 / 1883. I had a genealogist look up my ancestors from my father back. I will start with Henry's father. His name is NOAH D KERNAN JESSEE born 9/1858 died 9/17/1936 buried in SALTVILLE Va. He was married 3 times first to Elizabeth Ann Davis born 2/18/1859 Married on 10/20/1876. They had 10 children. 1. Eliza 2. Acie 3. Henry 4. Nancy 5. Alta 6. William Gordon 7. Bertha 8. Jefferson 9. Oakley 10. Ada. Married Mary Massie Huffman on 10/30/1901 they had 1 child { Ellis William } Married Florence McNew on 5/20/1905. they had no children. Now to grandfather Henry Jessee born 8/1883 died 1913. Married to Scottie Malaha Davis born 9/24/1890 died 2/7/1990 they were married on 2/2/1908. Child of Henry & Scottie is John Edward Jessee my father. He was born on 7/2/1910 died 8/4/1974. Married to Nellie Merle Castle born 3/26/1923 died 6/26/1985. They were married 12/13/1941. There children are [ Nancy Yvonne born 9/9/1942 ] [ Daniel Edward born 3/13/1953 ] [ Patrica Ann born 3/22/1954 ] [ William David born 3/17/1955 ] [ Richard Wayne born 9/26/1956 ] [ Debora Jane born 8/1/1961 ] we are all still living & we all have children. Some of us have grandchildren. Jim all of this info is correct as far as I know. Also how do I get a news letter. Let me know. I went to the family reunion last year & got to meet a lot of my cousins for the first time. If you need any more info let me know.

**JACK HOCKETT** [Tlas101@aol.com] wrote 7/23/2009, with this obituary for **Agnes Mahala Hess Jessee**, who married **Henry Taylor Jessee**, a John Jessee Jr. descendant via **Stanford Lea Jessee**. Published in the *Bristol Herald Courier* 7/11/2009.

LEBANON, Va. – Agnes Hess Jessee, 91, went to be with the Lord on Friday, July 10, 2009, in the Mountain View Retirement Home. She was born, March 8, 1918, the daughter of the late James and Susan Barton Hess. She was a member of the Green Valley Baptist Church. In addition to her parents, Agnes was preceded in death by her husband, B.C. Jessee; daughter, Betty J. Ferguson; son, James "Bud" Jessee; grandson, Freddy Jessee; seven sisters, Margaret McCloud, Olie Hess, Sarah Miller, Matilda Miller, Rachel Miller, Mary Hess and Minnie Miller; and seven brothers, John Henry Hess, Marshall Hess, Grady Hess, Lawrence Hess, Lon Hess, Carlos Hess and Carson Hess. Mrs. Jessee is survived by five daughters, Louise and Jim Haymes, Williamsport, Pa., Rebecca J. Barrett, Fran and Marty Schlichting and Linda and Freddy Garrett, all of Lebanon, and Clara and Lewis Thomas, Bristol Virginia; 10 grandchildren, 18 great-grandchildren, three great-great-grandchildren; 11 stepgrandchildren; one half sister, Susie Mitchell, Hopewell, Va.; and many nieces and nephews. The family would like to thank the staffs of Legacy Preferred Home Care, Mountain View Retirement Home and C Health. The funeral service will be conducted

at 2 p.m. Monday, July 13, 2009, in the Combs Funeral Service Chapel, with the Rev. Jim Fuller, the Rev. Paul Hite and the Rev. Paul Kinder officiating. Burial will follow in Russell Memorial Cemetery. Family and friends will serve as pallbearers.

**JIM BRAY** [nancyb1@embarqmail.com] wrote, 7/25/2009 with an important error correction regarding **George Cowan Jessee** family information. I responded: After studying what you have provided here and comparing families, I have eliminated this incorrect Vincent Jessee and his family entirely from the database.

I noticed this unlinked Vincent Jessee in your database (Vincent Jessee(#18462) b. abt 1841 & Virginia(# 18463) b. 1847). I believe this data is from a 1900 census Cleveland, Russell Co, VA census #114-Virginia Jessee b. May 1847 VA with 6 children: Thomas J. b. Sep 1876, Newton R. b. Jul 1880, Geo. H. b. Jun 1882, Maud M. b. Feb 1885, Sallie L. b. Apr 1887 & Charles G. b. Mar 1890/married 29 yrs/10 children/9 still alive/farmer /owns home

I believe these children are actually those of George Cowen Jessee (RIN4141) Virginia Breeding (RIN6742) in your database. I do not know why George Cowan Jessee is not with the family in 1900, but this appears to be his wife & children.

In 1910 George C. Jessee is living with (son) Tom J. Jessee's family & Virginia Jessee still has a separate household. Both households are listed in Cleveland, Russell Co. & both George C. & Virginia Jessee are listed as widowed in these separate households.

**BILLIE JO GRIZZLE GRIBBLE** [billiejog1@cox.net] wrote 10/14/2009 regarding **Maude Jessee Grizzle**

I am Maude Grizzle's granddaughter. Her children's names were Jack Grizzle, my father William Albert Grizzle and Doris Grizzle Ferguson. Also I noticed that Nannie Jessee's last husband was a Lowe. My mother Polly Jo Lowe married my father William A. [Bill] Grizzle. They were 3rd cousins. Her grandmother was Polly Davis Lasley, she was William Albert Jessee's half sister. Her mother was Nannie Jessee. I'm wondering if there is another connection thru the Lowe name. My mother lived in Lebanon. My mother's parents were Harry Brown Lowe and Ruth Lasley Lowe, Polly Davis's daughter.

## II. Archer Jessee

Archer Jessee (1776-1862) married three times: Nancy Browning (1781-1826); Rachel Herndon (1790-1833); and Mary Jane "Polly" Owens (1803-1884) and had fifteen children.

Archer is variously referred to as Archa, Archable, Archibald in various family pedigrees and other sources. It is my opinion that his name is Archer, and I further speculate that Archer was the surname of his grandmother, or g-grandmother, perhaps in the Lea family. Furthermore, his three wives are buried with him in the Archer Jessee Cemetery, and their stones indicate each as the wife of Archer.

**JIM BRAY** [nancyb1@embarqmail.com] wrote, 7/20/2009 regarding the family of **William Vincent Jessee s/o Edward "Dock" Kernan Jessee**.

Jim, I've researched Edward Kernan Jessee s/o William Jessee & Eunice Monroe Habern. As noted in your database Russell Co, VA marriage records indicated he married Amanda Jane Addison on 21 Mar 1881. According to census records, Edward & Jane appear to be in Wise Co, VA by 1900. I have summarized their census records as follows:

1900 Lipps, Wise Co, VA census #638-  
Edward Jessie b. Apr 1855 VA VA/VA & Jane Jessie b. Mar 1862 VA VA/VA with 5 children: Willie b. May 1882, Carson b. Apr 1885,

Thomas b. Sep 1890, Nannie b. Apr 1894 & Josie b. May 1900/married 20 yrs/8 children/6 still alive/farmer/rents home  
1910 Lipps, Wise Co, VA census #-  
Ed B. Jessee b. 1858 VA & Jane Jessee b. 1860 VA with 7 children:  
Carison b. 1887, Tom b. 1893, Nannie b. 1896, Mary b. 1901, Jack b. 1903, Walter b. 1905 & Bessie b. 1907/married 25 yrs/12 children/9 still alive/farmer  
1920 Lipps, Wise Co, VA census #719-  
Edward D. Jessee b. 1861 VA & Jane Jessee b. 1864 VA with 4 children:  
Carson b. 1884, Jack b. 1903, Walter b. 1904 & Bessie b. 1907/also Nannie Neal b. 1893 VA w/child: Ruth Neal b. 1916 VA/Farmer/Jack & Carson work in coal mines/  
1930 Lipps, Wise Co, VA census #123-  
Ed Jessee b. 1861 VA & Jane Jessee b. 1868 VA with 2 children: Carson b. 1888 VA & Thomas b. 1894 VA/  
William M./V.? Jessee b. 1884 lives next household

These following children married in Wise Co, VA & listed their parents as Dock & Jane Jessee per Wise Co, VA website:

William Jessee m. Annie Cox	2 Mar 1906
Tom Jessee m. Donna Brown	3 Mar 1919
Nannie Jessee m. Charlie Adkins	8 May 1913
Mary Jessee m. Ed Beverly	27 Sep 1917

Three male children appear to have registered for WWI draft:

(1)WWI draft registration William Vincent Jessee  
Address-Toms Creek, Wise Co, VA  
Born-6 May 1881  
Occupation-crusher foreman for V. I. C. & C. Co Toms Creek, Wise Co, VA  
Wife-Fannie Jessee  
(2)WWI draft registration Carson Jessee  
Residence-Toms Creek, Wise Co, VA  
Born-1882??  
Nearest relative-Jane Jessee(mother)  
Occupation-miner  
(3)WWI draft registration Thomas Jessee  
Residence-Tom's Creek, Wise Co, VA  
Born-1 Sep 1886  
Occupation-miner  
Nearest relative-Jane Jessee(mother) Tom's Creek, Wise Co, VA

In your database you speculated that William Vincent Jessee b. abt 1887 was the son of William Vincent Jessee b. 1847 & Rebecca Stinson using the following source:

Source: Ella Jessee Reed, of Fountain, FL, provided the following. "My husband's mother's step-father was William Vincent Jessee ("Will/Bill")-his mother was Jane ? - father was "Doc" Jessee. One brother- (known) Tom Jessee, one sister (known) Bessie Jessee."

Based on the above info & source, I believe "Doc(k)" was Edward Kernan Jessee & that William Vincent Jessee b. 6 May 1881 was his son.

I also summarized the census info for William Vincent Jessee & Annie Cox as follows:

1910 Lipps, Wise Co, VA census #147-  
Will B. Jessee b. 1882 VA & Annie B. Jessee b. 1886 VA with 3 children: Effie M. b. 1906, Vadie b. 1907 & a son b. 1908/married 4 yrs/5 children/3 still alive/works in coal mine/  
1920 Lipps, Wise Co, VA census #718-  
William B. Jessee b. 1883 VA & Annie Jessee b. 1883 VA NC/NC with 6 children: Effie b. 1906, Vardie b. 1908, Oscar b. 1910, Edgar b. 1913, Flora b. 1916 & Ora b. 1916/coal miner  
1930 Lipps, Wise Co, VA census #122-  
William M./V.?. Jessee b. 1884 VA & Anna B. Jessee b. 1886 VA NC NC with 5 children: Oscar b. 1909, Edgar b. 1911, Bell b. 1915, Ora b. 1915 & William M./V.? Jr b. 1923/laborer/rents home/married 24 yrs

I go back to Archer Jessee as follows: Margaret Burke Jessee/Sam Vince Jessee/Vincent Jessee/Vincent Jessee/Archer Jessee

### Jim Bray wrote further regarding his research.

While researching William Jessee(b.1830) s/o Vincent Jessee(b.1800)& Elizabeth Candler I came across this Feb 2005 email in the archives.

-----Original Message-----

From: Clyde M Senger [mailto: sengercm@juno.com]  
Sent: Friday, February 25, 2005 11:56 AM

To: jim@jessee.org  
Subject: William Jessee of Oregon

While working on a web page on James Pearl descendants, I was researching a William Jessee of Linn Co Oregon 1860-1870. He listed his personal wealth at \$1000 in 1860 which suggests he may have been in the California gold rush and thus might be the son of Vincent (1800 VA) that you mention on the Jessee Genealogy Service family tree at Ancestry. Also, he names his son Vincent. I am still working on the web page but am finished with the Jessee part as far as I know. Feel free to utilize this information if you wish.

You mention a marriage to Nancy SNAPP ca 1850 but gave no details and I could not identify William in the 1850 census. Have you? Clyde Senger

Mr Sanger website indicated Vincent Jessee married 23 Dec 1861 Linn Co, OR to Sarah Miranda MILLER, born 3 June 1845 (cp) or 1844? (calc) Union Co IN (cp), died 19 Nov 1871 age 27y 5m 16d Linn Co OR (cem), interred Brownsville Pioneer Cemetery Linn Co OR (cms). My compiled information & census date on William Jessee & family:

1850 Russell census indicated William age 20 living with parents-Vincent & Elizabeth Jessee.

1860 Linn Co, OR census p.316B William Jesse age 28 w/personal property \$1,000 & is farm laborer b.VA. living in household #324 of Perry Evans(25) & Evans family (wife & 4 children). The adjoining family household # 325 was Enoch Miller & family which included Sarah Miller age 14 b. IN who would be William Jessee's future wife.

A daughter who died in 1867 was buried in the Halsey Pioneer Cemetery which is just west of Brownsville, OR. His wife Sarah, who remarried, was buried in the Brownsville Pioneer Cemetery, located just NE of Brownsville, in 1871. I would assume that William Jessee is died between 1867-1870 & is buried in an (UM) grave probably near Brownsville. Brownsville, located in the Willamette Valley along the Calapooia River, was settled in 1846 & became a town in 1853. Brownsville is surrounded by flat agricultural fields to the west & forested hills to the east.

Will of Vincent Sr dated in 1876 mentions heirs of son William, deceased.

Sarah Jessee(wd) remarried Silas Keeney(wd) 10 Mar 1870 whose wife Malinda Pearl Keeney d. 8 Jun 1869

1870 Sand Ridge, Linn Co, OR census #70- Silas Keeny b. 1832 MO & Sarah M. Keeny b. 1844 MO with 5 Keeny & 3 Jessee children:(Keeny children)Mary J. b. 1857 OR, Elizabeth C. b. 1860 OR,Martha U. b. 1862 OR, Sarah C. b. 1864 OR & Laura M. b. 1866 OR; (Jessee children) Vincent b. 1862 OR, Amanda b. 1864 OR, & Mary O. b. 1866 OR/(children listed with last name Vincent in error)/\$3,000 real estate/\$600 personal property/farmer

Sarah died 19 Nov 1871(27y 5m 16d) & Silas died 17 May 1875 & by 1880 census the 3 Jessee children were living in 3 different households in Linn Co, OR.

In your database you indicate Nancy Snapp b. aft 1830 d/o William A. Snapp & Priscilla Price was the wife of William Jessee & that William & Nancy Jessee had a child-Vincent. Do you have any sources for this marriage?

William Jessee was unmarried living with his parents in 1850. The William Jesse in the 1860 Linn Co, OR census was unmarried. Nancy Snapp should have been in William A. & Priscilla Snapp's household in Russell Co in 1850, but she was not. I could not find a Nancy Snapp in William A. Snapp's household in the 1840 thru 1860 census as follows:

1840 Russell census-p.24 line 20 William Snapp 030001-000001 age 30-40 & wife 30-40 with 3 males 5-10

1850 Russell census-#906 William A. age 47 b. TN & Priscilla age 46 b. Russell Co with 5 children: William D.(20), Elkany D.(20), Benjamin P.(13), Christopher A.(7), & Catherine(5).

1860 Russell census # 1107 Wm A. age 56 & Priscilla age 56 w/ 4 children: William D.(29), Benjamin P.(25), Christopher A.(17), & Catherine(15).

Is it possible that information in the Vincent Jessee(1800-1877) Will was misread(see below)? "Nancy Snapp & heirs of William Jessee deceased" could have been misread to mean that Nancy Snapp was William Jessee's widow. But this Nancy Snapp in the Will was actually William's sister, Nancy Jessee b.1832 who married William Delaney Snapp s/o William A. Snapp & Priscilla Price on 4 Jun 1861 in Russell Co, VA. Based on my research, I do not believe that William Jessee was ever married to a Nancy Snapp.

Will Book 4, pg. 75 Russell Co, VA Will of Vincent Jessee Sr First to my son Vincent Jessee I will my home farm 200 acres & the balance of my Carter land & 12 acres known as my Fugate land. Vincent is to pay back to the estate \$1,300 in 4 equal payments in 1, 2, 3, 4 years. 2nd-to my son Archer S. Jessee 180 acres where he lives, he is to pay \$800 to my estate in 4 years. 3rd-I give to John T. Jessee, Francis B. Jessee, Thomas J. Jessee, Charles C. Jessee, David L. Jessee, Nancy Snapp & the heirs of William Jessee deceased, his share, daughter Elizabeth Williams 40 acres on Cedar Creek.Executors: Vincent Jessee Jr & Leonard S. Hargis Nov 30, 1876 & sealed by Vincent Jessee Witnesses-Lafayette Gilmer & George W. Williams Probated 6 Mar 1877

I hope this information is not too confusing, but I'm trying to get our databases to agree in case a Jessee Genealogy book is written sometime in the future.

I wrote in response: This is very important information and corrections for me, thank you. I have updated my database with the information, including the correct marriage of William Jessee to Sarah Miller in Oregon, not Nancy Snapp. William is one of the earliest Jessees to go West. I thank you for helping us discover this California Gold Rush and Oregon pioneering family. William's parents are Vincent & Elizabeth Candler Jessee. Vincent is a son of Archer Jessee and Nancy Browning.

**JIM & NANCY BRAY** [nancyb1@embarqmail.com] wrote, 7/22/2009, with information regarding an old question: **Who is C. Lee Jessee?**

Jim, the following is an email from Dr Joy Malone in Feb 2001:

"From: "Dr. Joy Malone" <drjoym@bellsouth.net>  
Subject: C. Lee Jessee

Date: Sun, 25 Feb 2001 11:15:39 -0800

The other day I located a tombstone in a cemetery in Newland, NC the inscription is:

C. Lee Jessee b. 1866 d. 1941

Ritta M. Jesseb.1873 d. 1955

I could not link them up with any databases. Possibly someone can use this info."

I have found add'l information from census data:

1900 Stafford, Mingo Co, WV census #201-

C. L. Jessee b. Feb 1866 VA parents VA &

Rittie Jessee b. Nov 1873 KY parents KY/rent home/  
engineer/married 7 yrs/no children/w/several boarders/

1910 Linville, Avery Co, NC census #44-Chas L Jesse b. 1865 VA  
parents VA & Merge(?) R. Jesse b. 1872 b. KY parents KY/married 17  
yrs/Chas-locomotive engineer/Merge-keeping hotel boarders

1920 Linville, Avery Co, NC census #47-Charlie L. Jesse b. 1867 VA  
parents VA & Rittie M. Jesse b. 1875 KY parents KY/Charlie-railroad  
engineer/Rittie- keeping a boarding house/

1930 Newland, Avery Co, NC census #65-Charlie L. Jessee b. 1866 VA  
parents VA & Rittie M. Jessee b. 1874 KY parents KY/married 37 yrs/  
hotel mgr/ owns home worth \$10,000/8 boarders & 2 servants

I have studied all the Charlie & Charles Jessee's in your database & only find one that might fit. Charles Jessee b. 1866 s/o Archer Samuel Jessee & Christenia essee. Their son Charles was in the 1870 & 1880 census.

1870 Russell Co., Census, pg. 400 Archer Jessee b. 1823 & Chris-

tina Jessee b. 1823 with 8 children:Samuel b. 1849, Elizabeth b. 1851, Mary b. 1853, Nancy b. 1854, Wilson b. 1858, Fanny b. 1863, Charles b. 1865, & Martha b. 1868 pg 400

1880 Lebanon, Russell Co census Archer age 57 & Catherine age 56 with 5 children: Nancy(24), Wilson(21), Fannie(16), Charles(14) & Martha(11). p.81A.

Maybe some other researcher has the answer or maybe this info will help someone determine if Charlie Lee Jessee has Russell Co roots.

I responded: Once again you have provided very valuable research. The open question is proving that this Charles Jessee, son of Archer Samuel and Christina Jessee, is C. Lee Jessee on the tombstone found by Joy Malone some years ago. Let's ask other Jessee researchers if they may know.

**JIM & NANCY BRAY** [nancyb1@embarqmail.com] wrote, 7/25/2009 regarding question about Jessee death records Tennessee State Archives-June 2001

In June 2001, Mike Malone emailed you some Jessee death records he had found in the Tennessee State Archives, I believe I can identify two of these:

(1)"Liza Jessie, DOB abt. 1834 Died May 1909 Claiborne Co., TN. Listed as married, died of cancer. Place of death Lone Mountain, Claiborne Co., TN. Attending physician was Dr. Carr."

I feel certain that this is Louisa Ellen Kelly, 2nd wife of John Tase(Trigg) Jessee(1824-20 Aug 1887) s/o Vincent Jessee & Elizabeth Candler.

Louisa Jessee's will is dated Apr 26, 1907, Claiborne Co, TN Wills, 1893-1932. Cemeteries of Claiborne Co, TN by Paul Johnson, 1982, p.128, lists a Louis A.(Louisa) E. Jessee, 1839-1909.

(2)"Jaunita Monroe (Loop) Jessee, DOB September 29, 1923, Mich. Died November 2, 1943, Maynardville, Union Co., TN. Died of Myocarditis. Husband listed as Pascal Jessee age 36. Father Roy Loop, Claiborne, TN. Mother Ronie Jessee, Claiborne, TN. Burial Cox Cemetery Maynardville, TN."

In my database Juanita Monroe Loop married Pascal Jessee on 28 Nov 1942. Pascal Jessee(1907-1976)was the s/o Milton Conley Jessee(1878-1942)& Lucy Jane Ousley(1876-1955).

Milton was the s/o Edward Lee Jessee(1857-1936) & Sarah E.Grubb(1859-1888).Edward was the s/o John Tase(Trigg) & Mary M. Burk(1824-1864).

Juanita Monroe Loop was the d/o Raymond Leroy Loop(1900-1970) & Zona Jessee(1901-1935).

Raymond was the s/o Ballard Alexander Loop(1883-1938)& Vesta Jane Ousley(1874-1950). Ballard was the s/o William M. Loop (1841-1913)& Louisa Francis Jessee(1849-1920) who was the d/o John Tase(Trigg)Jessee(1824-1887) & Mary M. Burk(1824-1864).

Zona was the d/o of Charles Barton Jessee(1881-1961) & Nancy Rowena Ousley(1881-1961). Charles was the s/o Edward Lee Jessee(1857-1936) & Sarah E. Grubb(1859-1935).Edward was the s/o John Tase(Trigg)& Mary M. Burk(1824-1864).

Source-"Some Descendants of John Burk(1656-1699)"

**JIM BRAY** [nancyb1@embarqmail.com] wrote, 7/19/2009 regarding **Ballard P. Jessee** b. Jul 1899 who is the son of **Conley Trigg Jessee**.

I noticed in your database that Ballard P. Jessee was not linked. I believe he is the son of Conley Trigg Jessee. In your notes for Conley Trigg Jessee the children:Bowden, Ballard & Frankie are mentioned, but they are not listed in your database.

It appears that Ballard P. Jessee was born in Texas with his father born in Tennessee & mother (Lula E. Tims) born in Texas.

Census summaries:

1900 Justice precinct 4, Coleman Co, TX census #389-

Conley T. Jessee b. Sep 1859 TN parents VA & Lula E. Jessee b. Oct 1860 TX parents AL/MS with 6 children: Mineola b. May 1886 TX, Lauricia b. Aug 1887 TX, John W. b. Dec 1888 TX, Bowden b. Feb 1895 TX, Burke b. Aug 1896 TX, & Ballard b. Jul 1899 TX/ Mother in law-Mary E. Tims b. Jan 1839 in home/farmer/rents home

1910 Lee Ctr, Lee Co, IL census #12-

Charles T. Jesse b. 1862(wd) TN VA/VA with 2 children: Bowden b. 1895 TX TN/TX & Ballard P. b. 1900 TX TN/TX/laborer (odd jobs)/owns home

1920 Charleston ward-3, Charleston Co, SC census #108-

Ballard P. Jessee b. 1900 TX TN/TX & Mary J. Jessee b. 1901 SC SC/SC living with father & mother in law (William R. & Mary R. O'Brien)

1930 Johnson City, Washington Co, TN census #-

Ballard P. Jessee b. 1901 TX TN/TX inmate in sanitorium/military veteran/no occupation

1930 Charleston, Charleston Co, SC census #115-Mary J. Jessee b. 1901 SC SC/SC/married/rents home @ \$8/mo/married 11 yrs/hotel waitress.

Washington County, TN., Record of Deaths, Book # 1)

Ballard P. Jessee W/M age 31 Born Texas Died March 14, 1931 at National Veterans Home, Johnson City, TN

Posted on Fri, Nov. 26, 2004 (The State, Columbia, SC)

Mary J. Biering, 84, of Eutawville, formerly of Charleston, the widow of Julian Biering, Sr., died Tuesday, November 23, 2004, from injuries sustained in an automobile accident. Born May 2, 1920, in Charleston, South Carolina, she was the daughter of the late Ballard P. Jessee and Mary O'Brien Jessee. She will be deeply missed by her two sons: Julian Biering, Jr. and his wife, Dorothy of Holly Hill and Stephen P. Biering, Sr. and his wife, Aletha of Sumter; daughter: Alberta B. Poole of Florence; aunt: Rita Rourk of Charleston; dear nephew, Larry R. Hyer of Miami, Fla.; 10 grandchildren and 20 great-grandchildren.

**ARYEH WETHERHORN** [elisha6@bezeqint.net] wrote, 11/5/2009 regarding **Ballard P. Jessee**.

I've been looking into my family records and found that a Mary Obrien (b 1901) married Ballard P. Jessee around 1920. They were living with her parents and he was an engineer at the Charleston navy yard. Your data base shows them with a daughter, Mary, born 12 May 1920. (I think we match up to here). I haven't been able to locate others from that branch, although it's possible that Mary Jessee Biering, whose 2004 obit you also have, has an aunt, Rita Rourk, related to my side of this family. Mary had a younger sister named Rita. Her mother was Mary Rose Wetherhorn Obrien. Do you have anything else about this family connection ?

### III. William Jessee

William Jessee (1779-1841) married Mary "Polly" Vermillion (1785-1879), and they had fourteen children. This family moved to Lee Co., VA.

### IV. Lea Jessee

Lea Jessee (1781-1852) married Barbara Gose (1796-1862), da. of Stephen Gose and Barbara Catron (Ketron) Gose, and they had ten children. This family moved to Missouri, and includes among descendants Archer Catron Jessee, the first Jessee to migrate to California before the Gold Rush.

**BENTON PAMELA** [bentonp@pcsb.org] wrote, 8/22/2009 regarding **Eugenia O. Jones**.

Hi! I was googling and happened upon your site. I have been trying to find out information about Eugenia O. Jones, an aunt of my great grandfather (I think), William Eugene (presumably after her) Johnson from Buckner, Missouri (aka blue township, Jackson County). I have two oil paintings that she did and my grandmother has a watercolor and my great aunt has a watercolor. I wondered if you knew more about her (family tree) and if you had any info about her other paintings, etc. I was overjoyed to see that she was born in 1865 and that she was in the 1880 census at age 15 (info from your site). If you have any

idea about how I could find out more, I'd love to know. Thanks, Pam Benton (maiden name Hughes and related to the Hudspeths, Jones', Johnsons, Hamiltons, Elseas, Mershons Powells, Bealls and many more in the Buckner area). Pam

I responded: I assume you are referring to my record 16330 for William Johnson married to Lela Katherine Hudspeth. Lela is a Jessee descendant, from Lea Jessee and Barbara Gose, who went West to MO from Russell Co., VA. I do not have more information than what is posted in the database at www.jessee.org, but would love to share your note in the Jessee Newsletter, and on the Jessee List, as others may have more information for you and will be interested in your line. Lea Jessee is a rare one among the 15 children of John and Frankey, he got out of the county! I would love to hear more, and learn more about all the descendants of Lela Katherine Hudspeth, too.

Thanks so much for responding! Lela Katherine Hudspeth Johnson was my great grandmother. Im sure you're familiar with her cousin, Anna Ford's family history. I'd be happy to have you include my message in your newsletter and would be overjoyed if anyone had more info. The next time I'm in MO, I'll plan some time to do some investigating. The one I'm trying to track down, though, is Eugenia O. Jones. I was under the impression that she was related on the Johnson side rather than on the Hudspeth side. Of course, Grandma Lela's mother's name was Hannah Jones, so maybe I've just got it backwards. Please keep me in mind if you find any more info. Thanks again! Pam

### V. David Jessee

Reverend David Jessee (1783-1856) married Catherine "Katie" Banner (1788-1860) and had thirteen children. See also the discussion under Rebecca Jessee Burk below.

**JACK HOCKETT** [Tlas101@aol.com] wrote, 8/12, with this documentation of **William Fuller Jessee & Mary Elizabeth Jane Fuller**, whose roots are a veritable history of SW VA founding families. William Fuller is the son of **Elder David Jessee and Katie Banner**, and Mary Elizabeth is the daughter of **William Isaiah Fuller and Mary Polly Burk**. To see their pedigree, search for William fuller Jessee, Jr. RIN 4738 in the database at www.jessee.org

**Wash. Co. VA DB 25**

p. 436: same... does not wish to retract it. ...this 07 Aug 1860... WCV, 26 May 1862: Deed delivered to clerk & adm. to record. .../ Indenture, 16 Feb 1860: WILLIAM F. JESSE (William Fuller Jessee) & MARY J. (Mary Elizabeth Jane Fuller), wife, Russell Co. VA to ROBERT CRAIG, WCV; for \$2000, hath granted, bargained & sold... unto ROBERT CRAIG & his heirs, one tract of land in WCV on waters of Gaspers Creek, a S stream of NFHR, bounded: ...with SOLOMON FLEENORs line, tree cor. to small sugar tree on top of ridge, chinquapin oak on top of ridge, dogwood on side of ridge, beech on bank near head of spring... containing (blank)... WM. F. JESSEE & MARY J., his wife... doth hereby covenant... /s/ WILLIAM F. JESSEE; MARY J. (her + mark) JESSEE. Russell Co. VA: N. E. BURDINE, Justice, certifies deed acknowledgment of WM. F. JESSEE, before him... desired me to certify acknowledgment to clerk of

p. 437: WCV for recording... this 20 Feb 1860... Russell Co. VA: N. E. BURDINE & JOSEPH B. GILMER, Justices, certify relinquishment of dower of MARY J. JESSEE, wife of WM. F. JESSEE... she wished not to retract it. ...this 20 Feb 1860... WCV, 26 May 1862: Deed delivered to clerk & adm. to record.

## VI. Elizabeth Jessee Gose

Elizabeth Jessee Gose (1785-1827) married George Gose (1786-1861), son of Stephen Gose and Barbara Catron (Ketron) Gose, and they had twelve children. See the Gose Family discussion under Lea Jessee above, as well as additional information under Rebecca Jessee Burk below.

## VII. Mary "Polly" Jessee Kiser

Mary "Polly" Jessee (1787-1836) married Abednego Kiser (1784-1814), who died in the War of 1812. They had four children and are the ancestors of many a Kiser from Russell Co. She later married James Chafin, whose abuse may have caused her death.

**LORETTA KISER** [lfkiser@gmail.com] wrote, 11/6/2009 with a name correction:

Abraham Kiser- 1830-1920 is not to my knowledge Abraham Lincoln. Abraham Lincoln is his son, Abraham Lincoln "Con", born 1861 approximately and died 1916.

West Virginia did not become a state until 1862. Most of these places should read Virginia, not West Virginia.

I responded: Thank you for the correction you posted on RootsWeb. I have cleaned up my database and appreciate your help to clarify that matter. The son only is Abraham Lincoln Kiser, and brave he was to name him such. To which Loretta responded:

You're welcome and you're right about them being brave to name him that. There's a family story that when Confederate soldiers came by the farm, the family told them the baby hadn't been named yet, the Yankee soldiers were told his name. There's also a curious lack of a birth record for him in the Russell County birth records, but his marriage record does state he was 22 in 1883.

Thanks for your work and for making corrections when the inevitable errors are found. I think there are seven Abraham Kisers born between 1830s and 1880s, so it's easy to get them confused.

## VIII. Frances Jessee Stone

Frances Jessee (1789-1860) married William Stone (1789-1860), son of Jeremiah Stone. They had ten children. This family is believed to have moved to Missouri, and we know so little about these descendants that any tidbit of information is big news, even an error correction to what I have recorded.

**JIM BRAY** [nancyb1@embarqmail.com] wrote 7/27/2009 with information regarding **Elizabeth Stone, who married Richard P. Hamilton and Boedicia I. "Dicy" Stone wife of William McCamey, both daughters of Frances Jessee & William Stone.**

I may have found some census data that may relate to the family of William Stone & Frances Jessee who left Russell Co for Missouri before 1840.

(1)William Stone's will included daughter Elizabeth Hamilton wife of R P Hamilton.

Summary of census data:

1830 Russell Co, VA census- Richard P. Hamilton 10001-0001

1 male-20 to 30 Richard  
1 female-15 to 20 Elizabeth ?  
1 male- 0 to 5 James ?

1840 Barbour Co, AL census- R. P. Hamilton 002001-000101

1 male-30 to 40 R. P.

1 female-30 to 40 Elizabeth ?

1 female-15 to 20 ??

1 male-10 to 15 James ?

1 male-10 to 15 William ?

1850 Barbour Co, AL census #9-R. P Hamilton b. 1808 VA & Elizabeth Hamilton

b. 1809 VA with 3 children:James M. b. 1829 VA, William N. b. 1831 AL, & Francis(f) b. 1848 AL/division 23/ James M.-clerk  
1850 Slave census Barbour Co, AL-R. P Hamilton listed with 2 slaves.  
1860 Eastern division, Barbour Co, AL census #230-Richard P. Hamilton b. 1808 VA

& Elizabeth Hamilton b. 1809 VA/post office-Eufaula, AL

(2)William Stone's will included daughter Dicy McCamey wife of William McCamey

1860 Buffaloe Lick, Chariton Co, MO census #65-Wiliam McAmy b.

1801 TN & Bodicia b. 1814 VA with 4 children:

Louisa A. b. 1837 VA,

Sarah C. b. 1846 MO,

Amanda b. 1849 MO &

William K. b. 1851 MO

/blacksmith/ \$50 real estate/\$85 personal property.

The information is speculative but seems to fit.

## IX. Sarah Jessee Vermillion

Sarah "Sallie" Jessee (1790-1851) married Wilson Vermillion, son of Jessee Vermillion, Sr. and Mary "Polly" Scott. They had three children.

## X. Boedicia Jessee Gose

Boedicia "Dicey/Dicy" Jessee married Stephen Gose Jr. (1792-bef. 1842), son of Stephen Gose and Barbara Catron (Ketron) Gose. They had eight children. This family moved to Iowa.

See the Gose Family discussion under Lea Jessee, who married Barbara Gose, and Rebecca Jessee Gose above, as well as additional information under Rebecca Jessee Burk below.

## XI. James Jessee

James Jessee (1794-aft 1846) married Jane Burk (1795-aft.1846), d. of Fleming Burk, Sr. and Rebecca Miller. They had four children. See also discussion under Rebecca Jessee Burk below.

**KEITH BIEVER** [Biever36@comcast.net] wrote, 9/25/2009 with information regarding his branch of the family. His gg-grandfather was **Daniel Williams**, b 17 May, 1813, Russell, VA who married **Mary "Polly" Jessee** b. 1822 & d 1872 daughter of James Jessee and Jane Burk

In my search for roots I found your 1999 msg re your vigorous search to document all descendants of John Jessee b 1750. Thinking you may still in be Chico I'm copying this to my sister who lives in Oroville. Our grandpa was James Edgar Williams and my middle name James comes from him. Our gr-gr-grandpa was Daniel Williams, b 17 May, 1813, Russell, VA and m. Mary Jessee b. 1822 & d 1872.

We would very much appreciate any connection you could make for us to your John Jesse and learn more about our Mary "Polly" Jessee ancestor. And we would appreciate seeing your entire Jessee tree.

I responded that I have quite a bit information for the family and pedigree of Daniel Williams and Mary "Polly" Jessee, daughter of James Jessee, one

of the 15 children of John and Frankey Lea Jessee. I can share a GEDCOM File, and you are welcome to explore the Website, and look at the Newsletters. It would be good to meet your sister in Oroville, only 20 miles away.

**JIM BRAY** [nancyb1@embarqmail.com] wrote, 7/22/2009, answering the question, **Which Nicey Jessee married Wm Henry Gilley?**

In July 2000 you had the following inquiry:

Source: Aubrey J. Dry Sr. (ajdry@inu.net) asks for help identifying his Nicey Jessee who married Henry Gilley in Virginia and moved to Texas. "I saw your page on the Jessee family and thought you might be able to help me. I am researching Nicey Jessee, who married William Henry Gilley in Virginia. They came to Fannin Co. Texas about 1895. She died 17 May 1910 and is buried in Fannin County. I believe her name may have been Unicey or Eunice. I have found a Unicey Jessee in the household of Unicey Jessee in 1880 Russell Co. Va. She is listed as a niece. Do you have any information on this Nicey Jessee?"

In my database I have this Nicey J. Jessee b. Apr 1860 VA as the daughter of Fleming Burk Jessee & Mary "Polly" Browning. She married William Henry Gilley (1864-1962) in Dec 1880 in Scott Co, VA. My source is from the Burk book "Some Descendants of John Burk (1656-1699)" on pgs 93-95 which includes their descendants & research done. In addition I have included some other census summaries: William remarried after Nicey's death

1900 Justice Precinct, Fannin Co, TX census #126- William H. Gilley b. May 1864 VA VA/VA & Nicy J. Gilley b. May 1866 VA VA/VA with 6 children: Charlie A. b. Nov 1882 VA, Floyd b. May 1884 VA, Emmit b. Aug 1885 VA, Jessee b. Jun 1887 VA, Dona b. May 1892 VA & Barlow b. Apr 1896 TX/married 18 yrs/8 children/6 still alive/farmer/rents home

1910 Justice Precinct, Fannin Co, TX census #246- Henry Gilley b. 1863 VA VA/VA & Nicy J. Gilley b. 1861 VA VA/VA with 5 children: Jessie b. 1891 VA, Leona b. 1894 VA, Barlow b. 1897 VA, Leonard b. 1901 TX & Esther b. 1904 TX /married 29 yrs/9 children/ 8 still alive/farmer/owns home

1920 Justice precinct 1, Grayson Co, TX census #- William H. Gilley b. 1863 VA VA/VA & Frances E. Gilley b. 1877 AL with 2 children: Esther E. b. 1904 TX VA/AL & William M. b. 1915 TX VA/AL/also stepson-Cecil H. Batsell b. 1899 TX TX/AL owns home w/mortgage

1930 Sherman, Grayson Co, TX census #- Henry W. Gilley b. 1863 Va Va/VA & Frankie Gillie b. 1875 AL SC/AL with 1 child: Willie M. b. 1915 TX VA/AL/ Henry 1st married 49 yrs ago(1881)/owns home worth \$2,000

**DARLENE MELTON** [darlene.melton@gmail.com] wrote, 10/1/2009 the marriages of **Jennie E. Jessee**, a daughter of Fleming Burk Jessee, Jr., to **Fred Charles Harrigan and John A. Larson**.

I did a little more searching about Fred Charles Harrigan (1891 MT) who married Jennie E Jessee (1902 VA) On 5-25-1920 in Spokane, WA they had a baby girl, Margaret Phyllis Harrigan. Her second husband, John Larson, & she were married 11-28-1924 in Spokane, WA. I found this on WA Vital Records.

Phyllis shows up on the 1930 Cowlitz Co., WA census with her stepdad, John A Larson, & 1/2 brothers Vernon & Duane Larson. So Jennie died between Duane's birth 2-8-1929 & the 4-8-1930 census.

**ANDREA BIRRELL BUEL** [Auntieandie@aol.com] wrote, 11/2/2009 requesting help finding conclusive evidence that proves the parentage of **John Burke** for DAR application purposes. This has direct impact for several of our **Jessee DAR members**, and I hope someone is able to help Andrea.

Hello, I am Andrea Birrell Buel and I'm Regent of the Pentagon Chapter, National Society of Daughters of the American Revolution. I live in Alexandria, Virginia and was born and raised here. I am retired from the Government after spending 38 years working in the Pentagon for the Secretary of the Army.

I became a member of DAR seven years ago thru the Burke family. I have currently traced two more of my ancestors back thru the Burke side of my family (on my mother's father's side of the family). he was Houston Burke) to two Patriots:

- 1) John Jessee (b. c.1750) married (c. 1775) to Franky Lea
- 2) John Banner married to Catherine Rachenpaugh, who had a child Catherine K. Banner who married David Jessee.

The genealogists at DAR are requesting additional conclusive evidence that demonstrates the parentage of John Burke in this lineage. I initially provided copies from the book "Some Descendants of John Burk (1656-1699) Middlesex County, Va." Chapter VIII, Page 265 stating that John Burke, son of John Fleming Burk, Jr. and Nancy Jessee. I have searched far and wide and can find no wills, church documents, selling of land deeds that shows John Burk (born c. 1827 in Virginia, married Nancy Culbertson and died in Scott County, Virginia p. 1880's) is the son of Fleming Burk, Jr and Nancy Jessee.

Thought I would query you to see if possibly you could point me in some direction or possibly have knowledge of someone within the Jessee family that can unlock this documentation needed by me so that I can provide it to DAR to get these two Patriots approved. I would be forever in your debt.

I asked for permission to share this inquiry.

Jim~ Approval granted and any postings will be much appreciated. Having only had the genealogy bug for seven years, I consider myself still a baby in the game and am learning new things every time I set out on a search. Was hoping to utilize the knowledge of the genealogist at NSDAR and others but learned they could only assist on new applications not supplementals. I will also contact the Registrar of the Tabitha Adams Chapter and hopefully your lead will answer my prayers Good to know that they have members in the Chapter that is my lineage. You are a angel, and I sincerely appreciate you answering my E-mail. Warm Regards, Andrea

**STUART JONES** [dopc67@comcast.net] wrote 10/15/2009 with this sad story about **Lona Jessee, a descendant of James Jessee, via Fleming Burk, James Abel and Patrick Bruce Jessee**.

I am a Jones descendant but I think one of your people married one of our more notorious Jones people. I am curious what you might know. I note that some info was supplied by a Jessee--who I think is now deceased per the obit I have seen--that links Herman Lee Jones and Lona Bernice Jessee.

A book has recently been published about Hermie Lee Jones (you can google "Hermie Lee Jones" in quotes to get the info) who participated in a notorious double murder in 1949 (Sevier Co, TN - though he lived in Fall Branch in Wash Co, TN). He was released about 1965 and I gather he lived with or married a woman within a few years whom I would deduce from the info of your Jessee source is Lona Jessee. The children listed in your Jessee's contribution were Steven Allen Jones and Amy Marie Jones. These are the same names I copied from a makeshift mailbox that included Hermie Lee's name about 20 yrs ago when I drove past what I presume was his place in Fall Branch, TN. I suppose I could have stopped to meet him (he was my Dad's cousin) but his reputation was such that I did not relish meeting him (What do I talk about? "So, did you kill anyone lately?").

Interestingly and tragically a Steven Allen Jones was convicted of a murder in Elizabethton, TN in 2004 and again, I would reckon we are talking about the same person.

I sort of have the feeling that Hermie's wife (the book says Hermie Lee divorced and had two children and one grandchild) had already left him by the time I drove by the home in the late 1980's. I seemed curious to me that the kids would have been. I notice that Lona's death was given as Feb 1997. I wonder if this was from an obit or tombstone (where?) or whatever.

You may not know much about Lona. I suspect life with Hermie separated her a bit from her kin but I know so little I cannot say. Maybe she would have reattached after leaving him if she is the one who married him--which seems probable to me. She would have been fairly young compared to Hermie (abt 25 yrs younger) when she had Steven Allen since I think he was probably born about 1970 judging from the age given to him in the Elizabethton Star (I think about April 15 or so



of 2004). I don't really know anything about Amy Marie Jones. Some internet searches have made me wonder if she is the Amy Jones who married Clayton Goad and is mentioned in two obits as a granddaughter of a Scott family (adopted? foster child?) from Carter Co.

It's hard to figure with a name as common as Jones. Anyway, I am curious if you have any info. I notice there are some Joneses in your tree from Ohio but I don't think they are the same bunch. Well I trust this is interesting but I hope not too depressing.

## XII. Rebecca Jessee Burk

Rebecca Jessee (1796-1860) married William Burk (1797-1850), son of Fleming Burk, Sr. and Rebecca Miller. They had ten children.

Kathryn Burke Greever, Jack Hockett, Imogene Burke Verbal, and Rue Burke Stevenson published *Some Descendants of John Burk, 1656-1699, Middlesex Co., Virginia*, available from the Iberian Publishing Co. Order online at [www.iberian.com](http://www.iberian.com). All royalties go to the Russell Co. Historical Society and Russell Co. Library Family History Room.

This 502-page book details the descendants of Fleming Burk, Sr. Four of his children married Jessees, two children and two grandchildren of John and Frankey Lea Jessee. Jane Burk married James Jessee; William Burk married Rebecca Jessee, Fleming Burk, Jr. married Nancy Ann Jessee, daughter of David Jessee; and Robert Burk married Anna Gose, daughter of Elizabeth Jessee and George Gose. This book includes over 1000 descendants of Rebecca Jessee and William Burk.

## XIII. Jane Jessee Fuller

Jane Jessee (1797-1869) married Henry Fuller (1792-1872), son of Abraham Fuller and Mary Sargent. They had ten children. This family moved to Illinois. While I have a scant amount of descendants' information, I do not correspond with any descendant of Jane Jessee Fuller, except, Vins Holbrook, previously featured in this newsletter, who is a Fuller descendant. This is a family that needs much research.

## XIV. George Lea Jessee

George Lea Jessee (1798-1882) married Elizabeth "Betsy" Counts (1799-1880), da. of John Counts, Jr. of Glade Hollow and Margaret "Peggy" Kelly. George and Betsy had fourteen children.

Many George Lea Jessee descendants are subscribers and have contributed very much information to the database. It is one of our best researched and recorded branches of the family.



## XV. Martin Jessee

Martin Jessee (1801-1879) married first Virginia Jane Price (1801-1853), da. of David and Jane Price, and they had eleven children. He married second Mary Jane Darnell (1834-1907), and they had seven children. Martin, with a total of 18 children, may have the most Jessee descendants in America.

**S LEE JESSEE** [[pietromagri@verizon.net](mailto:pietromagri@verizon.net)] wrote, 12/10/2009, with this sad news regarding the passing of her sister Tina's husband Leon Dale McFall [see photo above]. S Lee and Tina are descendants of Martin Jessee.

Leon Dale McFall SUFFOLK - Leon Dale McFall, 58, died Monday afternoon, Dec. 7, 2009. He was the owner of CSI, LLC, and a surveyor. He attended Greenbrier East High School, West Virginia University at Morgantown, taught at Bluefield State, and was a meteorologist in the Army. Leon was an outdoorsman and devoted family man. He is survived by his wife, Tina McFall and stepson, Emmett Jessee; brother, Lowell M. McFall and wife Gale; sister, Deanna J. Morrison and husband Bill of Lewisburg, W.Va. Leon was preceded in death by his son, Christopher Leon McFall and parents, Madeline and Rupert McFall, also of Lewisburg. He was a beloved uncle and stepgrandfather. He will be sadly missed by family and many friends especially his devoted dog, Lizzie. A funeral will be held Friday, Dec. 11, at 11 a.m. at Parr Funeral Home & Crematory, 3515 Robs Drive, Suffolk, with Dr. Donald Ray Jones officiating. Burial will be held Saturday in Riverview Cemetery in Ronceverte, W.Va. Friends may join the family today for a time of visitation from 7 to 8 p.m. at the funeral home. Memorial contributions may be made to the Suffolk Humane Society, P.O. Box 5083, Suffolk, VA 23435 or Pit Bull Rescue Central Inc., P.O. Box 335, Fulton, MO 65251. Condolences may be registered online at [www.parrfuneralhome.com](http://www.parrfuneralhome.com).

**STACY RENÉE JESSEE** [[stacyrjessee@yahoo.com](mailto:stacyrjessee@yahoo.com)] wrote, 9/8/2009, with this inquiry and additional information regarding **James Fletcher Jessee**, son of **Charles W. Jessee**, grandson of Martin Jessee.

My grand father's name is listed on Jessee.org. His name was James Fletcher Jessee. I would like to know how to have my deceased father (James Fletcher Jessee's son) as well as my uncle and myself, my sister, daughter, ect.

I responded: Thank you for your note. I see your grandfather, James Fletcher Jessee, son of Charlie W. Jessee and Sarah C. Cooper in my database, too. I am very glad to get additional information and any corrections needed. Please provide me the information for James and Amily's family, their children, children's marriages, and their grandchildren and more. All descendants information is welcome, but I will only make public the names of deceased. I would love to learn more about your branch of the family.

Stacy Renée Jessee responded:

James & Amily Jessee were married 5/21/1946  
They had three children  
James died 4/28/1989  
Amily died 2/14/1983  
My Aunt: Lois Jacyn Jessee married Henry Helbert  
She had 2 children  
1) Lahoma Helbert  
2) Henry Helbert Jr.  
(Lois died in 1998 and was born 7/25/1945)  
My Uncle: Wayne MacArthur Jessee has no children D.O.B. 6/3/1948  
My Father was Fletcher Roger Jessee born 3/15/1947 died 4/6/07  
He married Jacie Lou Ball on 3/27/1976  
He had me & my sister- Stacy Jessee (me) and Amy Jessee(my sister).  
They were married in Manassas Park, VA

## Missing Links & Conundrums

The following are only a few of the e-mail I am fortunate to receive. These, in particular, give color to our work, address problems, provide new information, corrections, or updates, and both answer and ask new "missing links" questions or other conundrums.

**ANN QUINN** [alquinn56@yahoo.com] wrote, 11/2/2009, with a question for us regarding the father of **Wade Candler**. I answered: I do not have any proof of this relationship. I got this information from Victoria Alexandra Ring, and she may still be available and able to respond to you.

Hi, I have been helping a relative with our geneology. Some list Wade Honaker as Wade Candler with his father as John H. Candler. Wade's mother was Mary/Mollie Honaker. Do you have proof that John H, was Wade's father? My relative is the grandson of John H. and they have never heard of Wade. I have checked Russel Co. records to no avail. Thanks for any way you can be of help. Ann

**HOLLY JESSEE** [hjessee1322@centurytel.net] wrote, 3/29/2009 to find **George Henry Jessee**.

I have ran into what seems to be a huge wall looking for more information on George Henry Jessee (also went by John Henry Jessee) b. 2 march 1876 in either Kentucky or Tennessee d. 23 Oct. 1946 in Kern County, California He married Nora A. Cannady. Children: Dewey E. 1902-1973; Clifford G. 1906-1984; Lonnie H. 1907-1976; Hobart L. Fred L 1909-?; Bertha Mae 1916-1998

I know that Lonnie Married Ina Mae Stinnett as they are my husband grandparents. Any help at all would great. I am really hoping that there wasn't a name change, but it is a strong possibility. I talked to one relative of my husbands and I quote "Those Jessee's where nothing but outlaws and scoundrels"

Of course you have my permission to share this information. Any help with this would be greatly appreciated. There is just one Aunt of my husbands left and she doesn't know anymore than what I have. I do have a family tree on Ancestry.com (Jessee/Snelson family tree), just not much info for the Jessee's past the George (John) Henry Jessee I mentioned. You have my email and its not a problem for you to give it out. Thank you very much for any help that may come from this.

**DAVID RANKIN** [david\_rankin@verizon.net] wrote, 6/2/2009 regarding **Ruth B Jessee**.

I am inquiring for information regarding Ruth B. Jessee, listed in your database as follows:

Ruth B. JESSEE born AUG 1899 in , Russell Co., VA  
Father: Marshal Greeley JESSEE b: 23 JUL 1872 in , Russell Co., VA  
Mother: Sarah "Sallie" D. (B.) CASTLE b: JUN 1871 in , Russell Co., VA

**I believe she may be my great-grandmother but I cannot make a connection for certain.** My great-grandmother was one Ruth B Harris but this was her married name as listed in the 1920 and 1930 Federal Census (image attached) showing her married to Walter B Harris of the Castlewood Magisterial District. I can positively confirm that the persons listed in this census record are my family. I have traced your Ruth B Harris from 1900 – 1910. The given name and birthdates and places match up and then suddenly, apparently the only Ruth B anything in that area is Ruth B Harris in 1920. My belief is that this is because it is the same person, now married. Your database lists no husband or children for Ruth B Jessee (daughter of Marshal Greeley Jessee. Do you have any information about her that might allow me to make this connection to the Jessee family?

## Correspondence

**MICHAEL DYE** [madye@roadrunner.com] wrote, 7/11/2009 regarding our mutual work and concerns, including, most importantly, the condition of the North Church Street Cemetery.

Hello Jim, Received your latest issue of the Jessee newsletter today. I was definitely surprised to see your announcement of the CD and DVDs I've created. Thanks for doing it. Hoepfully there will be some people that will find something of use in their reseach.

I also saw that you made mention of forwarding the Jessee newsletters for inclusion on a DVD. I think they would go over very well.

I see all the great Jessee family projects that you advocate. **I've been working on updating and adding photos on the website to the North Church Street Cem. which is located in Lebanon. In my opinion this is probably the most historic cemetery in all of Russell Co. and yet it is in absolutely pitiful condition. I just can't imagine how it was lost to time and though it has been rediscovered how it continues to be allowed to further deteriorate.**

There are so many historic figures from Russell Co. buried here including the county's 2nd clerk James P. Carrell, at least a couple physicians and at least seven Confederate veterans. There are still additional stones being found that are buried in the underbrush. I would like to see some group come together to restore and maintain the cemetery. I don't think the town of Lebanon is going to do it. The only problem is that the cemetery is actually inside the very north edge of the town limits and I wonder what anyone would have to go through to get the town of Lebanon to agree to let others clean it up.

While visiting Nelda's **Peterson/Skogstad/Hove/Flaten/Hamrick family in North Dakota** this summer, Nelda and I had the opportunity to visit the only North Dakota Jessee kin I know, **Charles Douglas "Charlie" Thompson** and his wife Judy and family. He wrote to thank me and I wrote back.

Charlie, Got your note today, and all the thanks is ours. We enjoyed that day very much, and were so glad to meet your family. I think we just got started talking, too. That lunch was one of our best meals away from home. Thank you for all your hospitality, in real Virginia form. We did get your preserves home safe and sound, but they sure tore apart my suitcase to inspect them! They must have wondered if that Choke Cherry Jelly was some kind of explosive! We will let you know when we taste them.

Our garden was waiting for us with an explosive harvest of peppers and tomatoes, and more squash than we care to eat, but we are very grateful for it, and are almost caught up...

## Resources On The Internet

The Internet is a remarkable resource for us. I will provide here information regarding Web resources and other links of interest to the Jesse(e) family.

### The Russell County Page

**MICHAEL A. DYE** has created **The Russell County Page** of the VAGenWeb division of the USGenWeb Project.

This is an award-winning site, and a terrific resource for all families whose sojourn in America included time in Russell Co., VA. Michael has been instrumental in assembling a vital online depository of Russell Co. records, indexes and abstracts, genealogical data, historical maps, local history, and lore. You can join the Russell Co. List Server. This is a must-see site for Jessee researchers.

<http://www.rootsweb.com/~varussel/>.

**MICHAEL A. DYE** provides the most excellent genealogy resources for SW VA genealogists and those just interested in local history through his extraordinary efforts to make public genealogy and historical records. I recommend you explore his work now available on DVD and CD including complete publications of the following: *The Southwest Virginian* magazine; a *Southwest Virginia Historical Book Collection*; the *Southeast Virginia Ancestors* publication, and collections of SW Virginia Family Genealogies. Michael has outlined his future project, too.

Now on to current and future projects.

#### **The East Kentuckian:**

I'm not sure how many people here are familiar with a quarterly magazine named *The East Kentuckian*, but it was an excellent genealogical quarterly magazine, similar to *The Southwest Virginian* and *Southwest Virginia Ancestors*, which ran from 1965 - 1995 and then again from 1998 - 2001. It concentrated mainly on eastern Kentucky, but also carried over occasionally into Southwest Virginia as many families coming to KY came from that area. I currently have every issue from 1979 - 2001 scanned (82 issues) and am in the process of formatting and OCR'ing them. I also have access to the 1965 - 1978 issues and will be scanning them as I can. Since *The East Kentuckian* was such a long running quarterly, I'm probably going to need to break it down into 2 DVDs to hold all the material, one including the issues from 1965 - 1980 and the other from 1981 - 2001. This being the case, I should have the one from 1981 - 2001 ready shortly if anyone is interested in getting a copy.

#### **The Mountain Empire Genealogical Quarterly:**

The Mountain Empire Genealogical Quarterly was another quarterly magazine similar to *The Southwest Virginian* and *Southwest Virginia Ancestors* that, as far as I can tell, ran from 1982 - 1989 (8 volumes). Tom Rudder sent me vol's 2 - 4 (12 issues) awhile back. Since that time I have acquired 10 more issues and believe that I have located the remaining ones that I am missing. Not sure how long it's going to take yet, but when I get these copied and scanned I'll be making this available.

Harlan Footprints (5 vol's, 1982 - 1991, printed irregularly), Harlan Mountain Roots (10 vol's., 1986 - 1996) and Letcher Heritage News (20 vol's from 1995 through 2005 and possibly more beyond): These are also quarterly magazines, the first two put out in Harlan Co., KY and the third in Letcher Co., KY. Is there an interest in these as I think I have them available to me?

I also still plan to try to put together a CD/DVD of SW Virginia records, but that will probably be after at least *The East Kentuckian* and *The Mountain Empire Genealogical Quarterly*.

I plan to provide Michael Dye the entire library of Jessee Newsletters for possible inclusion in a future DVD Collection. May I also urge the JHF to consider

providing their book *Jessee Stories and Remembrances* for such a DVD.

**MICHAEL DYE** posted on varussel at RootsWeb the following tool to find topographic cemetery maps.

I was wondering if there might be an interest in this. I've been working on pinpointing cemeteries on the USGS Quad topographic maps. Initially I started doing this so I could see which cemeteries I'd been at and which ones I still needed to go to, but then I thought that others might have an interest in these maps for their own research.

I've loaded up the Big A Mountain quad for everyone to look at and see what you think. It's in pdf form. The link to download the map is:

[http://www.rootsweb.ancestry.com/~varussel/cemeteries/Big\\_A\\_Mountain.pdf](http://www.rootsweb.ancestry.com/~varussel/cemeteries/Big_A_Mountain.pdf)

To be able to use all the features, you may also need the TerraGo Toolbar. This is a neat toolbar used by Adobe Acrobat and the Acrobat Reader. It allows you to view the longitude and latitude coordinates on the map as well as allowing you to measure distances and areas and has a few other features. If you want to download that here's the link to it:

[http://www.rootsweb.ancestry.com/~varussel/cemeteries/TerraGo\\_Toolbar.exe](http://www.rootsweb.ancestry.com/~varussel/cemeteries/TerraGo_Toolbar.exe)

Now, as a key to the map. I've placed several different color notes at cemetery locations. The yellow notes indicate cemeteries that I've either personally been to or have the info about whose buried there. The red notes indicate cemeteries that I don't yet have info on and still need to visit. The blue notes are cemeteries that I think I have the info on but I need to revisit to confirm the name of the cemetery. Actually, two of the red note cemeteries, the Honaker-Wilson & Ira Ray cemeteries in the bottom part of the map, I've been to, but must have misplaced the data and am still trying to locate it.

You can see the name of each cemetery by just moving your mouse pointer over the note for each one. Another neat little feature that I can do is to include the people buried in the cemeteries within the notes. Check out the Moses Harris and Jackson Cemeteries in the bottom right corner of the map (just move you over the notes and then double click the note to see all the data.) I've been thinking about re-doing the cemetery books the Taylors did years ago and finishing the series (they stopped with many cemeteries not yet charted). Now I'm trying to decide whether to put them out in book form by USGS Quad with an included CD showing their locations or to include to persons buried in each cemetery directly on CDs. I like the idea of being able to view them directly on CDs, but think putting it in book form would be more practical.

By the way, we went down to Russell Co. this past week and I went tramping around the mountains in the Lynn Spring and Hollow Poplar Ridge areas placing a few of the cemeteries I already had as well as locating a few new ones I previously was unaware of, including ones where Confederate soldiers John G. Hurt & Jerome Bonaparte White are buried. My next toy's going to be a handheld gps device with topographic maps installed :)

**MICHAEL DYE** posted on RootsWeb this link for **the North Church Street Cemetery in Lebanon.**

I've received some new names and a bunch of photos of tombstones in the North Church Street Cemetery in Lebanon (Old Lebanon Cem) from Faye McCraine. I'll probably be receiving more over the next few days and will be adding those too. If your interested, I've added the info and loaded the photos up on the website. Here's the link:

<http://www.rootsweb.ancestry.com/~varussel/cemeteries/north-stchurchcem.html>

If you want to see where the cemetery is located, go to google maps and then copy and paste the below coordinates exactly as they appear below:

36.905855, -82.081035

This will take you to the hill the cemetery is located on and pretty close to the exact location of the cemetery. Now if you look just a little below that you will see what looks like a white house with a brown roof. If your having difficulty locating it, here's the coordinates for it: 36.905371, -82.080370

## JHF News

The Jesse Historical Foundation, JHF, publishes its own newsletter, *JHF News & Information--The Official Voice of the Jesse Historical Foundation*. They have asked me to differentiate this newsletter from their "official one" for the JHF.

I am no longer a JHF Board member, but I continue to offer the [www.jessee.org](http://www.jessee.org) Website, the Jesse List on RootsWeb, and this Jesse Family Newsletter to the board for JHF news and events. I invite all JHF members to join the Jesse List and subscribe to this Jesse Family Newsletter.

In August 2008, the JHF decided to hold annual reunions every two years, on even numbered years beginning in 2010. Jesse families are encouraged to hold local and regional reunions in odd numbered years.

In October 2007, the JHF Board voted to pay (not exceeding \$500) for the purchase or repair of headstones for any of all of the 15 children born to John and Frankey Jesse, and those born to Old Phillip Jesse. If interested, please contact any of the committee members below for information and assistance. Carl Jesse: 276-669-6352; Norma McHone: 540-362-9385; Jim Bray: 423-246-7157; Sandra Hood: 276-676-2348.

VERNON & PAULINE SALYERS [[vpsaly@naxs.net](mailto:vpsaly@naxs.net)] wrote, 5/7/2007 announcing the first volume of *Jessee Stories & Remembrances*, for purchase.

They are \$25 plus \$5 per book if mailed. Please make check payable to JHF & mail to: Pauline Salyers  
5074 Green Valley Road  
Lebanon, VA 24266-6553

If you have any questions contact me 276-889-0055.

### JHF 2010 Board Meeting Dates

Unless otherwise stated, JHF Board Meetings are held at the Quality Inn, Exit 19, Abingdon, VA.

**March 13, 2010 10 am:** JHF BOD Meeting

**August 14, 2010 10am:** JHF Annual Meeting, Reunion & Picnic at Coomes Recreation Center, Abingdon, VA.

### Jessee Genealogy Book Proposed

From the President: Your JHF Board of Directors proposes to produce a Jesse family genealogy book (or books) and is asking for you help in this endeavor. Please send your suggestions as to what you wish to be included and the format you would desire, keeping in mind we currently can catalog 15,000 + names from John and Frankie Lea Jesse to the present. We are also asking for volunteers to help edit the book which may well be a monumental task, but is we believe a greatly desirable goal of the Jesse Historical Foundation. Please respond to the Foundation at: P. O. Box 1617, Lebanon, VA 24266 or e-mail to [vpsaly@naxs.net](mailto:vpsaly@naxs.net).

## JHF Projects

The current JHF Board is dedicated to managing the Annual Reunion and Research Day. That is a great deal of work and deserves our thanks, support, and hands. I believe the JHF support the following worthwhile projects. Whether you are a JHF member or not, these projects need volunteers.

**1. Planning for National Jesse Family Reunions, Research Days, and Annual Meetings.** This is the first and foremost goal of the JHF. A dedicated few are doing more than their fair share in organizing and managing these activities. They always need volunteers to help with the details of providing a Welcome Reception, Research Day, Annual Meeting and Reunion Picnic.

**2. Creating a Jesse Family Cook Book II.** By the effort of Mary Akers and several other volunteers, who have been featured in previous newsletters, the first cookbook has been published and sold out. Let Mary know if interested in another publication.

**3. Creation of a Jesse Book, *Remember When*, with family stories, histories, and photos.** This too has been accomplished, the first volume was available at the 2007 Reunion.

**4. Creation of a Jesse Genealogy Book or Books.** (See article)

**5. The establishment of Virginia State highway, Russell County historical, or private markers for Jesse's Mill and other appropriate family sites.**

A private highway sign for Jesse's Mill and a commemorative marker for John Jesse, Revolutionary War Soldier at the cemetery behind the Mill Creek Baptist Church (see photo) have been accomplished. These accomplishments may set a precedent for developing further private commemorative signs for additional family landmarks.

**6. Clean-up and preservation of Jesse cemeteries and historical sites.** There are so many that need our time and attention. I still hope that the JHF, working with local government, youth groups and organizations, can provide leadership for such efforts, raise and give money where and when appropriate. See also JHF News.

Missing from this list is any support for efforts to restore Jesse's Mill, or to be involved with efforts to protect, preserve, and provide access to the John and Frankey Lea Jesse cemetery. These will need to be separate efforts.

## John Jesse Cemetery

Protection and restoration of the John and Frankey Lea Jesse Cemetery with family access, is a desire of many. This cemetery is owned by Mr. Jimmy Herndon, a Phillip and Gabriel Jesse descendant. I believe we need to seek the cooperation of Mr. Herndon to provide or pay for his costs for cleaning up, mapping and fencing this cemetery.

We need to work with Mr. Herndon to find a way to hold him harmless for any liability and to protect his privacy, property and farming activities from those who may wish to visit this cemetery.

It is clear that Virginia law (see the Summer 2005 Newsletter) makes it illegal for Mr. Herndon to do harm to the cemetery and he is obligated to provide descendants access. I continue to hope that if Mr. Herndon were asked and agreed, the new JHF Board would again undertake and fund this project.

We still need to get John Jesse formally recognized as a Revolutionary War Soldier and this cemetery acknowledged as a Revolutionary War grave site. We know that it is also a Civil War soldier grave site, and may need this formal recognition too. We need the cemetery surveyed and marked, if not fenced. Volunteers are needed to pick up this baton.

## Jessee's Mill Declared National Historic Landmark

JOE JESSEE ([joejessee@yahoo.com](mailto:joejessee@yahoo.com)), our JHF founding president (2001-2005), was a key player in achieving our finest accomplishment to date, but so much work needs to be done to take it from here.

**The US Department of Interior Park Service, has declared Jesse's Mill in Russell County to be a National Historic Landmark.**

This follows similar State of Virginia action to list Jessee's Mill on the Virginia Landmarks Register last December (see Winter 2005 Newsletter and the *Lebanon News* article, 12/15/2004). Joe sent the press release with this good news to the *Lebanon News* on 5/5/2005, and the article appeared in the *Lebanon News*, 5/11/2005.

This action opens the way for an appropriate non-profit corporation to seek grants and other funding for the acquisition and restoration of Jessee's Mill. It will open other avenues for recognition and support, too. This was the necessary first step.

Several JHF members, Russell County historians and friends, did research and gathered the critical information necessary to document the history of Jessee's Mill used in the applications. Most of this body of knowledge and credit to those who contributed to it have been published on the Jessee Website at [www.jessee.org](http://www.jessee.org) and in the Newsletters over the last decade. I thank all those who helped along the way.

Joe Jessee, with support and help from Sherman Wallace, Mill owner, spearheaded this successful effort with the formal State and Federal applications. These declarations are tremendous accomplishments to add to Joe's success at the renaming of the County Road to Jessee's Mill Road and establishment of the Jessee's Mill Historic Highway Marker. It was a very productive end to Joe's service as founding President of the JHF organization.

## Mill Creek Historic Community

**Many of us believe that an appropriate organization or benefactor should acquire Jessee's Mill along with the dam above it and the Jessee School for a Jessee's Mill restoration project, as the anchor for a Mill Creek Historic Community.**

We have hopes to acquire enough land around the mill, dam, school, the Andrew Jackson Jessee home and the miller's home to preserve a sense of the historic Mill Creek Community. Sherman Wallace, the owner, indicates he is willing to work with a group or organization regarding these ideas. This is a wonderful opportunity to preserve these significant historical landmarks and perhaps create a small historical community around it for Russell Co. and all its sons and daughters across America.

I have asked various individuals, board members of the JHF and local history and genealogy groups in Russell County to consider how this project might happen. The response has been and continues to be nil, so I continue to offer the following plea.

The Virginia State and Federal declarations of Jessee's Mill as an historic landmark provide us the opportunity to form a separate public non-profit tax-exempt organization for the purpose of acquiring, preserving, and some day restoring Jessee's Mill, Dam, and School as the centerpiece for a Mill Creek Historic Community.

Donors have offered to cover the costs of creating such a private non-profit charitable corporation. One of our family lawyers has also volunteered to help with the legal paperwork, and others are prepared to donate more to the effort. Sherman Wallace is willing to help, and others have offered to give modest amounts of money. At this time I would like to hear from any individuals who can offer time to help organize and participate in a small working committee there in Russell Co. This first group would discuss and set the goals and objectives of forming such an organization, outline strategies and means to achieve our goals, and determine the legal procedures and costs to form a public non-profit corporation dedicated to this purpose. I would like to form a committee that could become the core of the new board of directors for such an organization. The first chore is to determine whether there are enough interest, volunteers, and potential support to proceed further.

We have many responses from others outside of Russell Co. offering modest donations and moral support but no offers of leadership from anyone or any organization nearby. We are disappointed to say the least, and may just have to shelve this dream until another time. May Jessee's Mill last so long.



# Jessee's Mill Preservation

**Whether a Mill Creek Historic Community ever comes to be, the "preservation" of Jessee's Mill remains a major concern.** As a historic Russell County landmark, you would hope that Russell County leaders would share interest, especially since the owner is willing to cooperate with any public or private entity to preserve it and restore it someday. To our friends in Russell County, we need your help.

**Here is a summary of what we know about the Mill from the many who have contributed.** The water-powered Jessee's Mill is located 2.5 miles north of Route 71 on Route 645, Jessee's Mill Road. It is believed the dam and first mill were built before 1791 by Aaron Van Hook on Carr's Creek, now Mill Creek. It is mentioned in a survey of this land dated, 13 June 1791. It was sold in 1792 to William Gilmore.

The mortar-free stone dam, based on a Peruzzi design (Italy), strengthens with stronger water current. Handmade wooden gears for the mill wheel, believed to be an Oliver Evans design, were installed about 1814. In 1890, the mill was enlarged to a three story building with automated roller process machinery from Salem Machine Works (Virginia). Mill operations ended in 1932.

In 1794 William Gilmore sold the land and mill to John Jessee, a Revolutionary War musician and soldier. The mill was improved by John Jessee and later owned by his son Archer Jessee. John and his wife Franky Lea Jessee raised a family of fifteen children and are buried on this land at West longitude 82 09'23", North latitude 36 55' 04." The current mill was constructed by Andrew Jackson Jessee, John's grandson, whose 1878 brick home is located just across Mill Creek.

Mill Creek once was a thriving community with a school, church, general store, and blacksmith, centered on the Jessee mill and businesses.

During spring 2003, Joe Jessee and Sherman Wallace submitted a preliminary application to the VA Dept. of Historical Resources for State historical status (later approved). On June 16, 2003, Joe and Sherman toured the Jessee Mill with Mike Pulice, the Architectural Historian, Roanoke Regional Preservation Office, Virginia Department of Historic Resources. Mike Pulice believed the Mill to be fully eligible for both State and National Historical Register status, and commented on its remarkable integrity. He also advised Sherman Wallace on appropriate preservation measures, some of which are needed immediately.

**SHERMAN WALLACE wrote, 2/19/2003, with a request for donations to help him preserve at least the status quo at Jessee's Mill until some other arrangement for its long-term restoration is made.** You may find his complete letter in the Summer 2003 Newsletter and on the website. He is proceeding with evaluation and some work, but it will take a good deal of money to do what is needed, even for just preserving the status quo. I have requested that members of the family and other lovers of Mill Creek and Russell County history to communicate directly with Sherman Wallace about preservation of the Mill. Sherman owns Jessee's Mill, Dam, and land around it, and is a Jessee descendant, as well. I have toured the Mill and Jessee lands (including the cemetery when he leased it) with him, and know of his interest in preserving the Mill, Cemetery, School and lands around them. My wife and I were guests in his mother's home, and enjoyed his generosity and hospitality. I find him to be an honorable man, sincerely interested in the preservation of Jessee's Mill.

**Recently there has been new interest and activity with an offer from a metal worker and millwright, John Mark Carter to work with Sherman Wallace to first preserve, then later restore the mill.** I also spoke with Sherman Wallace in December and he has been doing repairs of the Mill roof and painting. He is excited about this prospect below and will arrange for John Carter to visit the Mill this winter or spring.

The notes below from **JOHN "MARK" AND AMY CARTER** are the latest of several I have had over the last several months. John is a craftsman, who works on restoring historic mills like Jessee's Mill. He has volunteered to assist us with first the preservation, then restoration of Jessee's Mill, if we can ever organize an effort to do this. This is his latest offer, among much extensive correspondence about his experience and desire to help save Jessee's Mill.

From: Mark & Amy [mailto:johnmatisse@myway.com]  
Sent: Tuesday, July 14, 2009 11:28 AM  
To: Jim@Jessee.org  
Subject: Very Interested in helping save your Familys Mill

I own a small Metal fabricating shop In Bedford VA. I just recently have been donating my skills as a Welder & Metal fabricator for The Historical society for the county of Bedford VA. when i saw that the Jessee Mill had a National Plaque assigned to it I decided that maybe I should offer my skills to you . I like to restore old machinery as a hobby on the side of my ornamental & welding shop. Right now I am involved with the restoration effort going on with The Big Otter Mill, located In Bedford County VA. I am helping to restore the water wheel . I would very much like to help you restore you mills wheel also. I hate to watch such valuable landmarks fall down. I am not rich but I have window frames & the glass that fits them . most are the six Glass panes type window . They were taken from old houses that were being torn down in Lynchburg VA. I have a huge old cattle barn on my property filled with Junk taken from old Houses & some were manufactured in a wood shop that was located on our farm before we moved here. If you could tell me the size windows the old mill needs I could see what I have . I would like to help save your water wheel also if . The Water Wheel factory normal quote for a rebuilt single rimmed wheel is right around \$19,000 to restore the wheel back to working condition. that is at rock bottom price quote . big Otters wheel is costing the town of Bedford a even \$34,000.00 dollars. That is with me dismantling the wheel as a free donation. If you want to see a trailer I built for one of my customers . .http://www.ornamentalironart.com . I have been a metal fabricator for 21 year now . I know a lot about water wheels .Especially Fitz type now. if your wheel is a Fitz wheel ,and it is Riveted it was built before 1918. I know right off the top of my head where I can get a used wrought iron slew -gate , Bearings , Babbette & a knew Gear if needed, I would like to see your mill some time . If your interested please email me . Sincerely yours, John Mark Carter

I responded eagerly, and Mark and I have had much correspondence since. The following are just a sample.

Sent: Monday, September 07, 2009 1:54 AM  
Subject: Jessee Old Mill & saving the mill for the future

I wanted to ask you this the last time I wrote to you . I found a mill in Buchanan, Virginia that was washed out by a flood in the late 1960's it has the same size Fitz type water wheel - Shafts and the shaft Babbette barrings all are in good shape . It also has the sluice Box with out damage to it . I wanted to know if you would like me to try to find out if the owner of these washed out mill ruins would donate the parts to go towards renovation of the Jessee Family Mill. the fitz wheel is in better shape then the one on your mill . I would be willing to try to secure the old wheel parts off the mill that is in ruins. the spokes are all in good shape . let me know something , sincerely yours, John Carter

Sent: Saturday, December 05, 2009 12:01 PM  
Subject: Happy Thanksgiving

Thank you for the nice email ... I wish some day in the future, We can all sit down & talk about how we saved the Jessee mill for the Jessee family members and other Friends to come and enjoy a piece of history preserved accurately. especially for the young to see a piece of 18th century history as it was intended to be. Along with the Old school House restored to it's Original condition . If it could be a piece of living History it could tell a real story of your family's history as well as be a teaching tool. It could be a none profit & be self supporting . But my wish is to help you save this old wonderful building . Thanks again for the kind words . Sincerely yours Mark , or John Mark Carter . Friends call me Mark .

# The Family Database

**The Jessee Family Genealogy Database is on the Web at the RootsWeb World Connect Project.** RootsWeb is the foremost volunteer-based non-profit genealogy resource on the Internet. Please go to:

**<http://worldconnect.genealogy.rootsweb.com>**

This World Connect Website provides an index to multiple genealogy databases, provides excellent display and print options for pedigree and descendants charts. Do a search for one of your distant ancestors. Look for data records submitted by "jimjessee," and if you select one it will take you to our database. You can also navigate to the database directly from our Jessee Genealogy Service home page. Please go to:

**<http://www.jessee.org>**

Our database is over 45,000 records. I do mean "our" database, as it is made up of the tens of thousands of hours of your research, the results of which you have generously and kindly shared with me. I have concerns about the downside of this computer revolution, the Internet, and the ethics of genealogy research, but still conclude that greater good is done by making our work public. However, I am using filters to delete information on living persons.

I know that by the standards of some, I have violated best if not ethical practice, by making so much unverified information public. It is already clear that errors in this database, even when later corrected, show up all over the Internet in other people's work, too often uncredited. Others, many unknown to me, have used and cited this database as an authoritative source. Beware, it is not!

I very much regret it when I see known errors, which appeared in this database in earlier years and have since been corrected, show up in others' genealogies, and quoting me as the source! I shudder at the fact that I know there are many unknown errors in the database, along with ignorant speculations, fantasy and plain lies.

Nevertheless, I have had so much expressed gratitude from dozens, if not hundreds, of people who have been helped in their research by our database, that I persevere. I certainly do welcome corrections, updates, additions, and documentation of information.

## Our Purpose

**I believe that we are, indeed, all cousins, and that we can be colleagues and friends, too.** By sharing information and helping each other, we come to know what it means to be part of an extended family and to appreciate our common heritage.

I research my own JESSEE ancestors, including the ARM-STRONG, SMYTH/SMITH, PORTER, DUNCAN, BICKLEY, RICHMOND/RICHMAN, BARTEE and BARRICK families; and many other SOUTHWEST VIRGINIA FAMILIES who have intermarried with the Jessees, including the BANNER, BROWNING, BURK(E), COUNTS, FULLER, GOSE, KISER, STONE, and VERMILLION families. I have an abiding interest in family history.

I would like to discover all of the descendants of the fifteen children of JOHN AND FRANKEY LEA JESSEE, and assist other Jesse(e) family members with their research. This is admittedly a monumental chore. I am giving myself the rest of my life to accomplish it. The fun is in the learning and the friendships I develop along the way. I am rewarded all the time by your e-mail, calls, visits, conversations, and correspondence.

I am asking you to respond to this newsletter with answers to questions, documentation, your own materials, and, of course, current information about your branch of the family. I will filter out living individuals in the version of the database that is made public. Please feel free to correct any errors found. I wish to have a correct and trustworthy database as a resource for the family. I welcome the submission of pedigree and descendants charts, letters, manuscripts, electronic or scanned images of source documents and photos.

# How To Help

I am operating on subscriptions and donations and don't even break even on out-of-pocket costs. The labor is all volunteer.

Unfortunately after 34 years of working I have developed a disability which makes any prolonged time typing very painful. My computer time has been significantly limited and my regular data entry routine has all but stopped. While I continue to plink at it, I am not denting the perhaps 3000-4000 records piled high and waiting to be keyed in. I will need help with data entry into the database in the future.

I provide the newsletter free to anyone who has asked for it, provided me information, or has expressed interest and cannot afford to subscribe. I am providing the newsletter free to several historical and genealogical organizations and libraries. You are welcome to provide addresses of others that may be interested in our effort. I am looking for those willing to exchange information or represent their branch of the family or area of the country.

I am sometimes disappointed to find that less than 50% of readers subscribe or donate anything. I do need help, even if it is simply informing me to stop sending you the newsletter if it has become junk mail. I am steadily reducing my mailing to include those who have subscribed, provided donations, helped in some other way, are sponsored by someone else, or are a family treasure. If you are getting this newsletter, you are at least a family treasure. If I drop you in error, just let me know. Please inform me of address changes as returned and re-posted mail costs me, too.

## Annual Subscription

**I am asking for a minimum subscription of \$20 a year for two issues of the newsletter.** I need and appreciate your additional donations in defraying the considerable cost of research, printing, and postage of the newsletter and other materials I send without charge to inquirers. Additional donations also support those who can't afford to pay.

## Newsletter Reprints

Back editions are available on the Website, and you are free to print them from there. I have some separate original sets of prints: #1-7, #8-9, #10-11, #12-13, #14-15, #16-17, #18-19, #20-27 (although I am out of certain years and without some attachments that have become obsolete). You may request these for \$100 for copies of all back issues *still in print*, and a subscription to the current year.

## *The Jessee Family Newsletter*

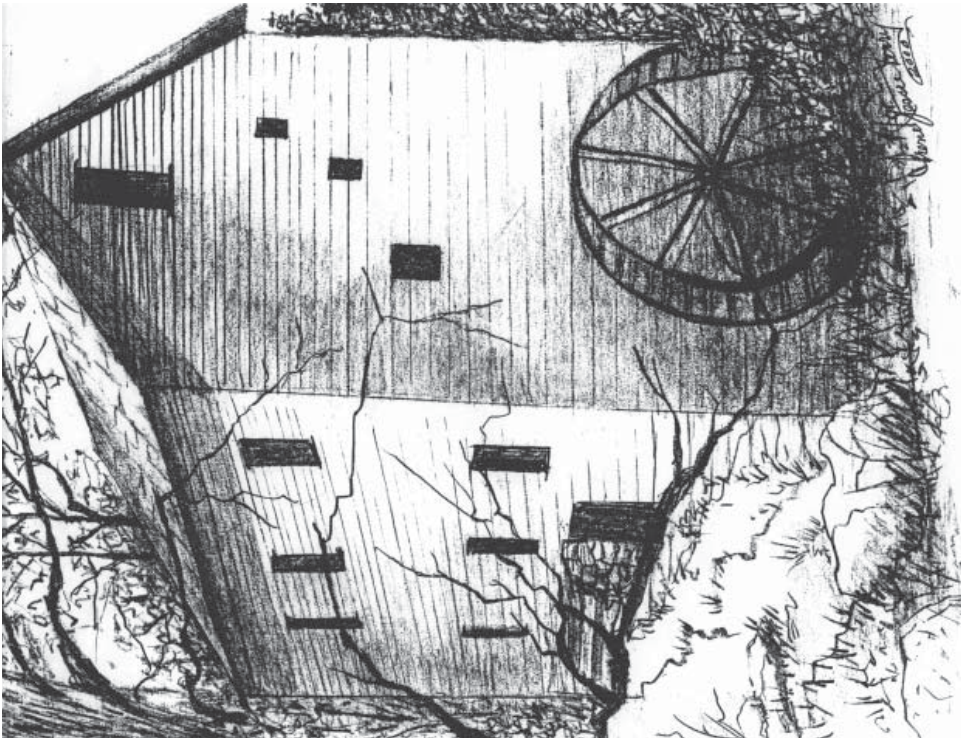
**Edited and Published by  
James Wilson "Jim" Jessee**

**1272 Hobart Street  
Chico, CA 95926-3702  
Telephone: 530-342-2652  
E-mail: [Jim@Jessee.org](mailto:Jim@Jessee.org)**

**Website: [www.jessee.org](http://www.jessee.org)**

**© Copyright--All Rights Reserved**

The Jesse Family Newsletter  
1272 Hobart Street  
Chico, CA 95926-3702



Your mailing label indicates the status or last issue of your subscription. If it is January 1, 2010 or earlier, your subscription has now expired. I have provided you the first issue of the new year as a reminder and request to renew. **Please renew for 2010 at the NEW RATE of \$20 per year.**

Please inform me of any corrections needed regarding your expiration date or interest in receiving this newsletter. I have continued to provide a copy to some whose subscription has lapsed, because I believe you may still want it. I have indicated some as "sponsored." Please inform me if you wish to continue receiving the newsletter or if you wish to stop.

A special thank you to those who have provided those precious additional gifts and donations that keep me going. These donations allow me to provide complimentary copies to history and genealogy societies, libraries, major contributors of research materials, and to sponsor those who cannot afford to subscribe.